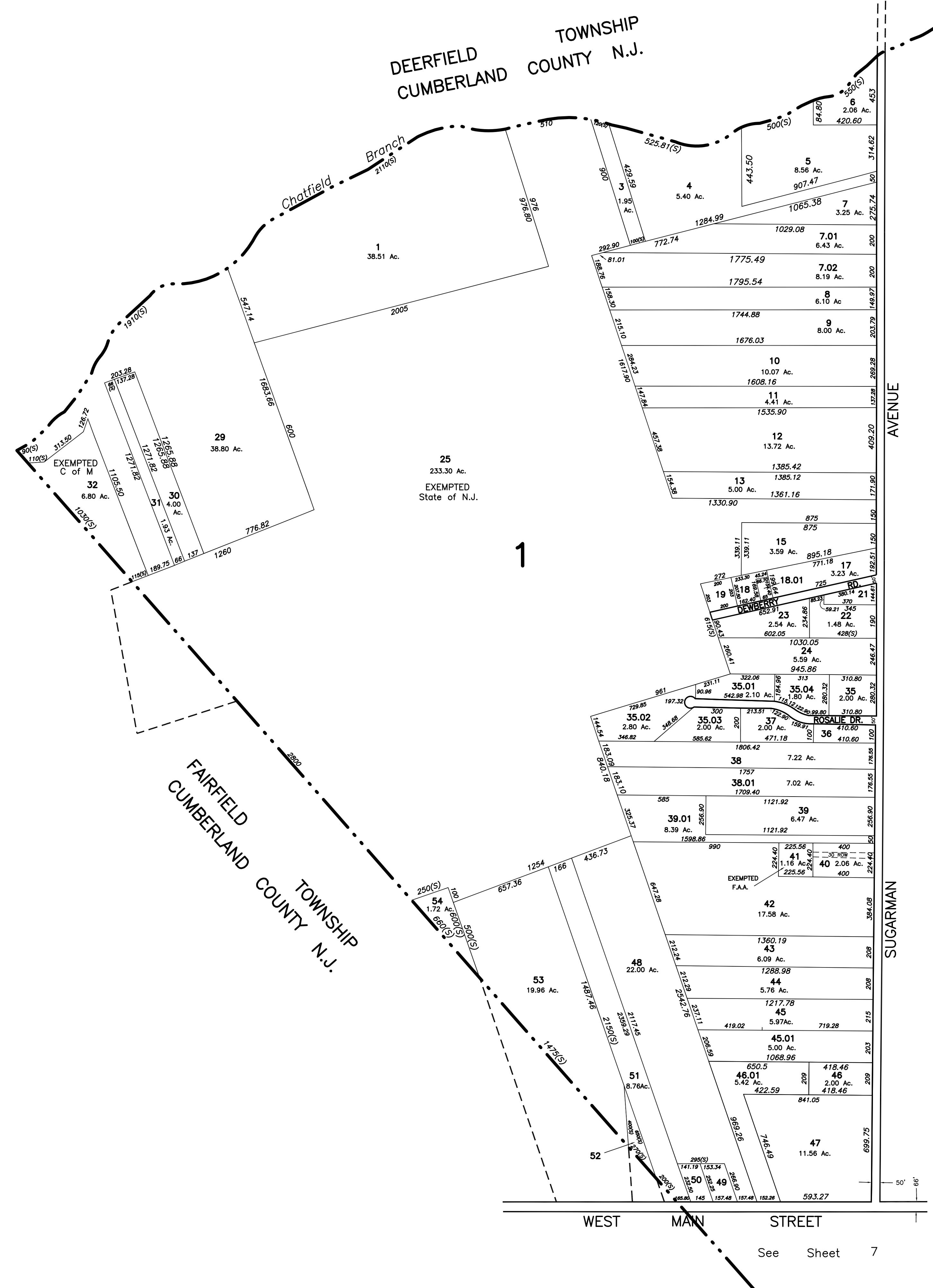
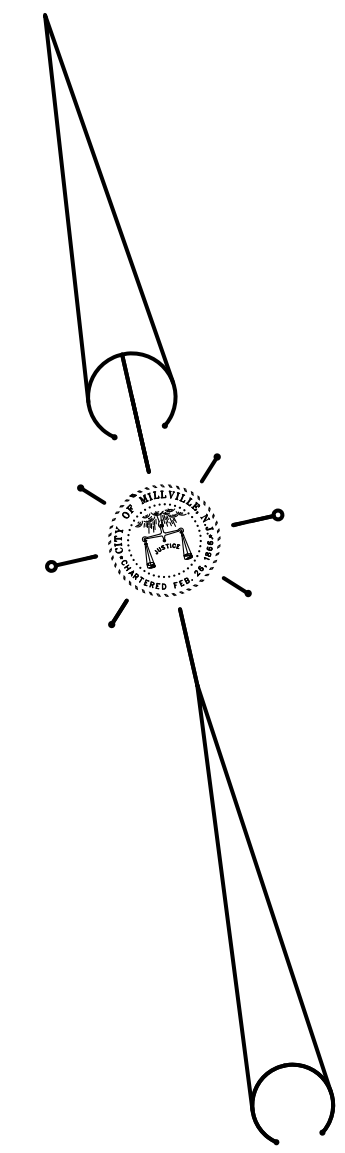


REVISIONS		
DATE	NAME	NUMBER
4/18/12	Sheet Check RHT	20371
8/13/13	Blk 1, Lot 46 & 46.01	20371



See
Sheet
2

See Sheet 7

THIS SHEET IS A PRINTED COPY OF THE TAX MAP PREPARED BY ROBERT H. THOMAS, SR., PLS AND DATED JUNE 2001. THE APPROVED ORIGINAL IS ON FILE IN THE CITY OF MILLVILLE MUNICIPAL ENGINEERS OFFICE.

NEW JERSEY DEPARTMENT OF THE TREASURY
DIVISION OF TAXATION
PROPERTY ADMINISTRATION
APPROVED AS A TAX MAP PURSUANT TO THE AUTHORITY OF
N.J.S.A. 54:1-15 & 54:5-1
FOR THE DIRECTOR, DIVISION OF TAXATION
Jana J. Coll C.T.A.
JANA J. COLL, CHIEF, LOCAL ASSESSMENT COMPLIANCE
William H. Black C.T.A.
WILLIAM H. BLACK, SUPERVISING ENGINEER UTILITIES
DATE: JAN 15 2002 SERIAL NO. 798

TAX ASSESSMENT MAP
CITY OF MILLVILLE
CUMBERLAND COUNTY, NEW JERSEY
SCALE: 1" = 400' JUNE 2001
ROBERT H. THOMAS, SR., N.J.L.S 20371
2429 E. MAIN ST. MILLVILLE, NEW JERSEY