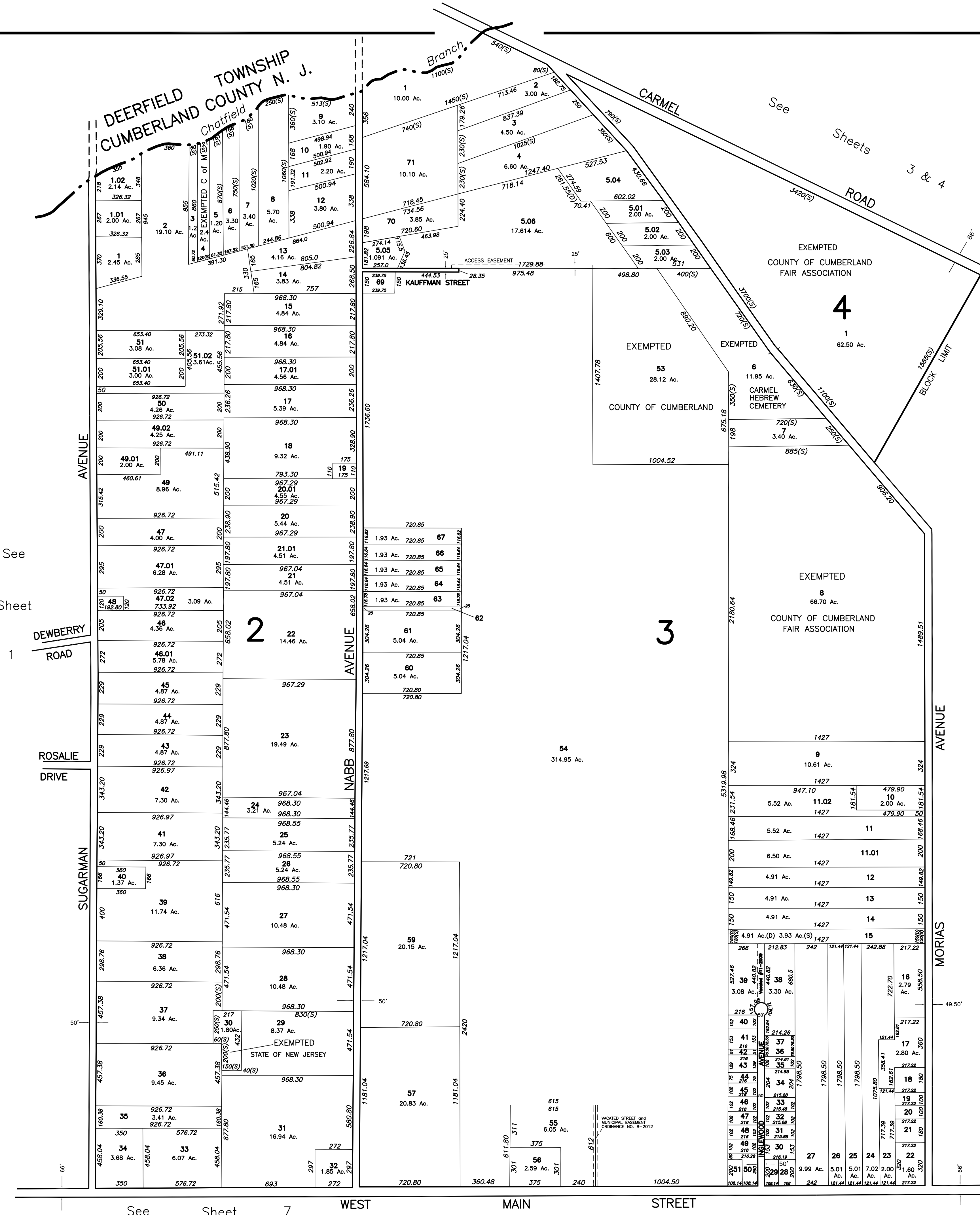
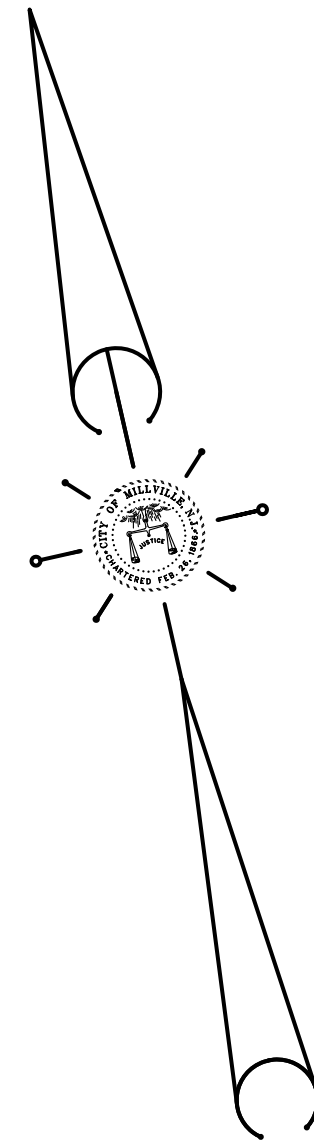


REVISIONS		
DATE	NAME	NUMBER
11/15/02	Robert H. Thomas Sr., NJLS	20371
5/15/03	Robert H. Thomas Sr., NJLS	20371
3/29/04	Robert H. Thomas Sr., NJLS	20371
7/27/04	Robert H. Thomas Sr., NJLS	20371
2/16/06	Robert H. Thomas Sr., NJLS	20371
3/13/09	Blk 3, Lots 38 & 39 vacation	20371
4/18/12	Blk 2, Lots 8, 9, 13 & 47.02	20371
2/20/13	Blk 2, Lots 51 & 51.02	20371



THIS SHEET IS A DIGITIZED COPY OF THE TAX MAP PREPARED BY ROBERT H. THOMAS SR., PLS AND DATED JUNE 2001. THE APPROVED ORIGINAL IS ON FILE IN THE CITY OF MILLVILLE MUNICIPAL ENGINEERS OFFICE.

NEW JERSEY DEPARTMENT OF THE TREASURY
 DIVISION OF TAXATION
 PROPERTY ADMINISTRATION
 APPROVED AS A TAX MAP PURSUANT TO THE AUTHORITY OF
 N.J.S.A. 54:1-15 & 54:50-1
 FOR THE DIRECTOR, DIVISION OF TAXATION
James J. Coll C.T.A.
 JAMES J. COLL, CHIEF LOCAL ASSESSMENT COMPLIANCE
William H. Black C.T.A.
 WILLIAM H. BLACK, SUPERVISING ENGINEER UTILITIES
 DATE: JAN 15 2002 SERIAL NO. 798

TAX ASSESSMENT MAP
CITY OF MILLVILLE
 CUMBERLAND COUNTY, NEW JERSEY
 SCALE: 1" = 400'
 JUNE 2001
ROBERT H. THOMAS, SR., NJLS 20371
 2429 E. MAIN ST. MILLVILLE, NEW JERSEY