

REVISIONS		
DATE	NAME	NUMBER
2/5/03	Robert H. Thomas Sr., N.J.L.S.	20371
8/16/05	Robert H. Thomas Sr., N.J.L.S.	20371
1/4/06	Robert H. Thomas Sr., N.J.L.S.	20371
4/25/12	Block 37, Lot 6 acreage	20371

See Sheet 2

See Sheet 5

See Sheet 1

See Sheet 8

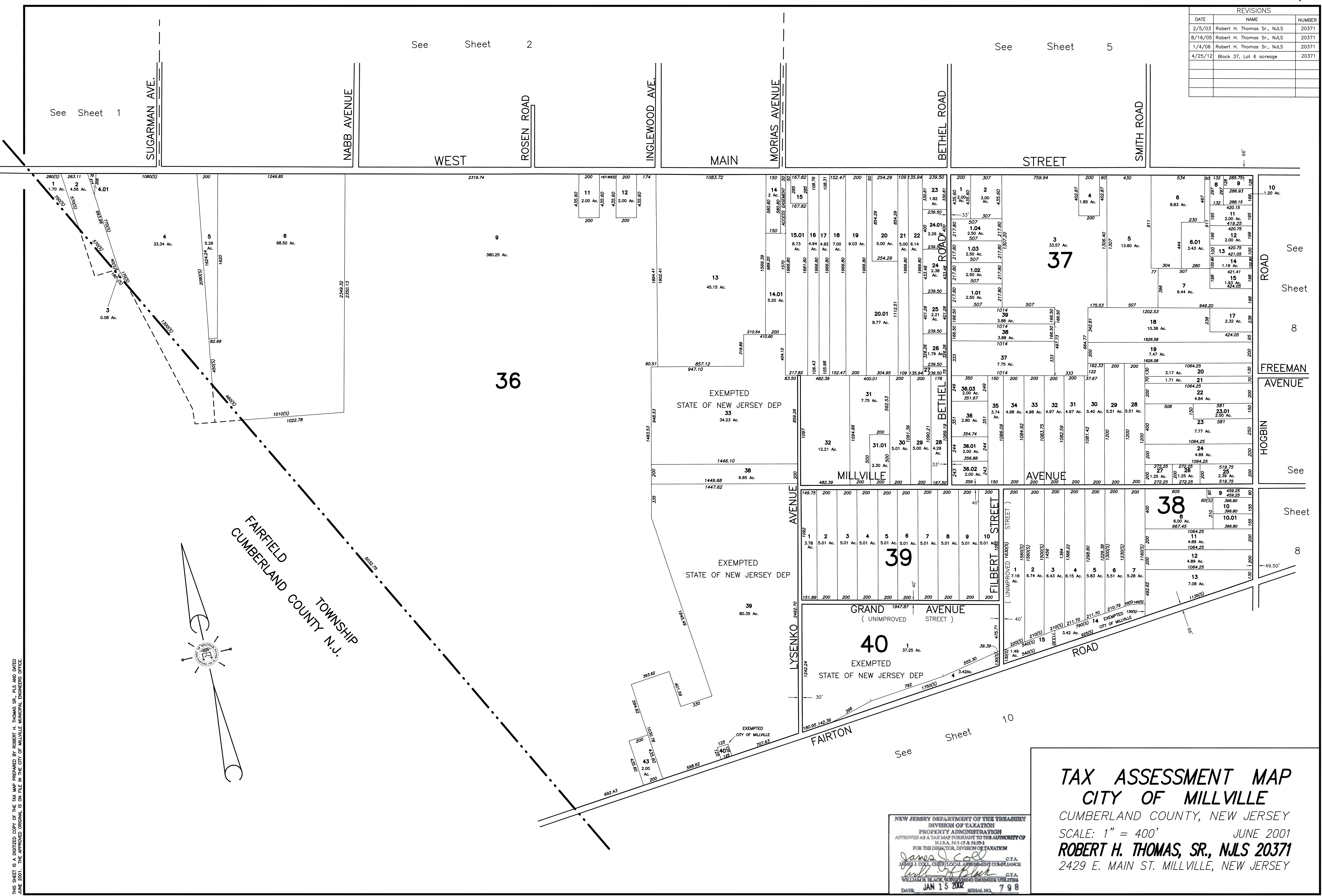
FREEMAN AVENUE

HOBIN AVENUE

See Sheet 8

NEW JERSEY DEPARTMENT OF THE TREASURY  
 DIVISION OF TAXATION  
 PROPERTY ADMINISTRATION  
 APPROVED AS A TAX MAP PURSUANT TO THE AUTHORITY OF  
 N.J.A.C. 17:27-15 & 17:27-21  
 FOR THE DIRECTOR, DIVISION OF TAXATION  
*James J. Coll* C.T.A.  
 JAMES J. COLL, CHIEF, LOCAL ASSESSMENT COMPLIANCE  
*William H. Black* C.T.A.  
 WILLIAM H. BLACK, SUPERVISING ENGINEER UTILITIES  
 JAN 15 2008 SERIAL NO. 798

**TAX ASSESSMENT MAP**  
**CITY OF MILLVILLE**  
 CUMBERLAND COUNTY, NEW JERSEY  
 SCALE: 1" = 400' JUNE 2001  
**ROBERT H. THOMAS, SR., N.J.L.S 20371**  
 2429 E. MAIN ST. MILLVILLE, NEW JERSEY



THIS SHEET IS A DIGITIZED COPY OF THE TAX MAP PREPARED BY ROBERT H. THOMAS SR., N.J.L.S. AND DATED JUNE 2001. THE APPROVED ORIGINAL IS ON FILE IN THE CITY OF MILLVILLE MUNICIPAL ENGINEERS OFFICE.