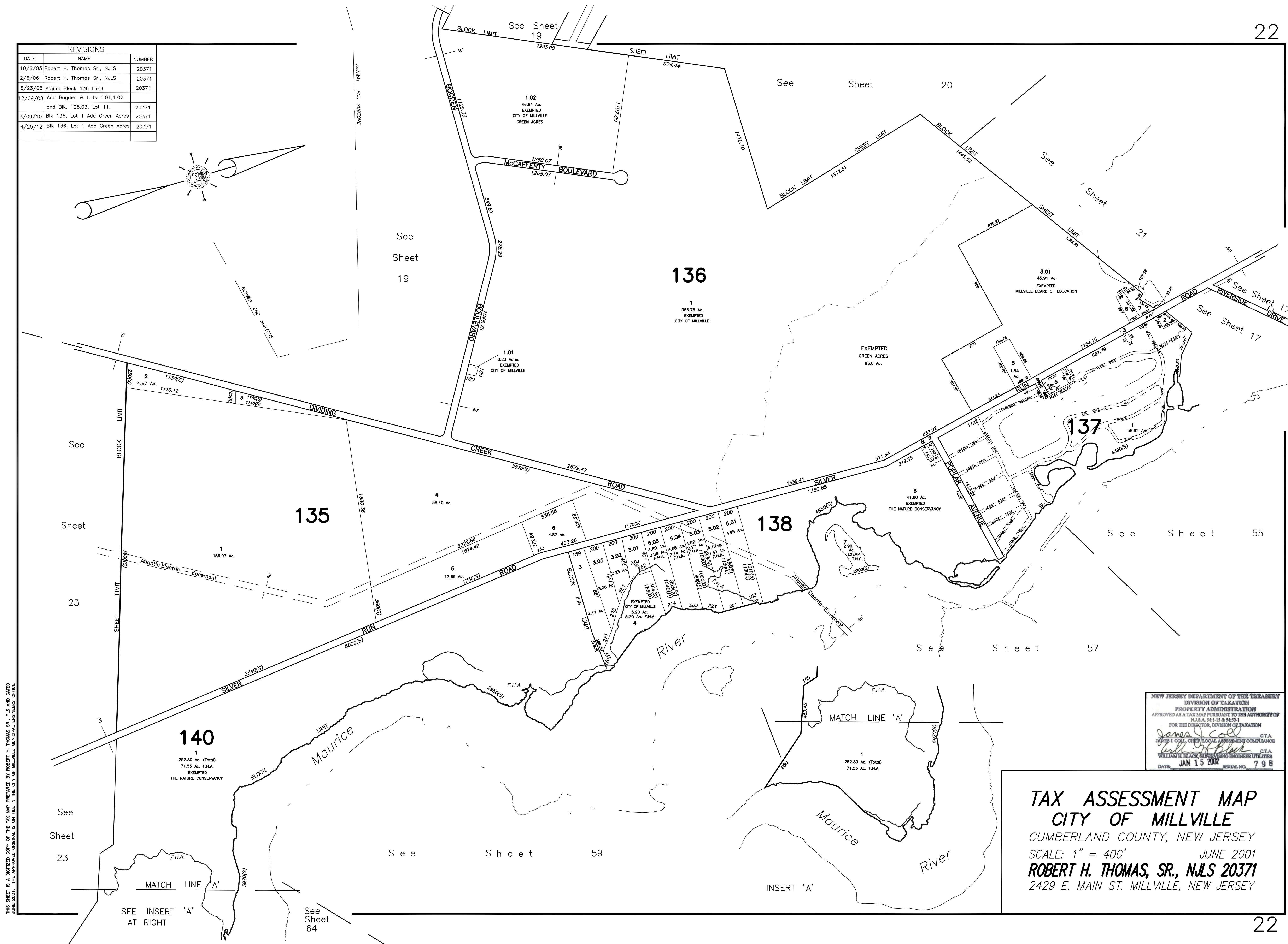
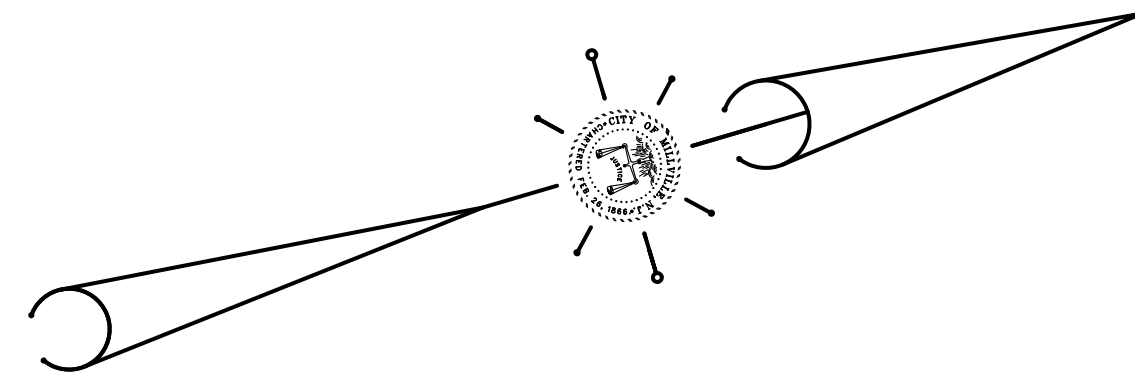


REVISIONS		
DATE	NAME	NUMBER
10/6/03	Robert H. Thomas Sr., N.J.S.	20371
2/6/06	Robert H. Thomas Sr., N.J.S.	20371
5/23/08	Adjust Block 136 Limit	20371
12/09/08	Add Bogden & Lots 1.01, 1.02 and Blk. 125.03, Lot 11.	20371
3/09/10	Blk 136, Lot 1 Add Green Acres	20371
4/25/12	Blk 136, Lot 1 Add Green Acres	20371



THIS SHEET IS A DIGITIZED COPY OF THE TAX MAP PREPARED BY ROBERT H. THOMAS SR., N.J.S. AND DATED JUNE 2001. THE APPROVED ORIGINAL IS ON FILE IN THE CITY OF MILLVILLE MUNICIPAL ENGINEERS OFFICE.

NEW JERSEY DEPARTMENT OF THE TREASURY  
 DIVISION OF TAXATION  
 PROPERTY ADMINISTRATION  
 APPROVED AS A TAX MAP PURSUANT TO THE AUTHORITY OF  
 N.J.S.A. 54:1-15 & 54:29-1  
 FOR THE DIRECTOR, DIVISION OF TAXATION  
*James J. Coll* C.T.A.  
 JAMES J. COLL, CHIEF, LOCAL ASSESSMENT COMPLIANCE  
*William H. Black* C.T.A.  
 WILLIAM H. BLACK, SUPERVISING ENGINEER UTILITIES  
 DATE: JAN 15 2002 SERIAL NO. 798

**TAX ASSESSMENT MAP**  
**CITY OF MILLVILLE**  
 CUMBERLAND COUNTY, NEW JERSEY  
 SCALE: 1" = 400' JUNE 2001  
**ROBERT H. THOMAS, SR., N.J.S 20371**  
 2429 E. MAIN ST. MILLVILLE, NEW JERSEY