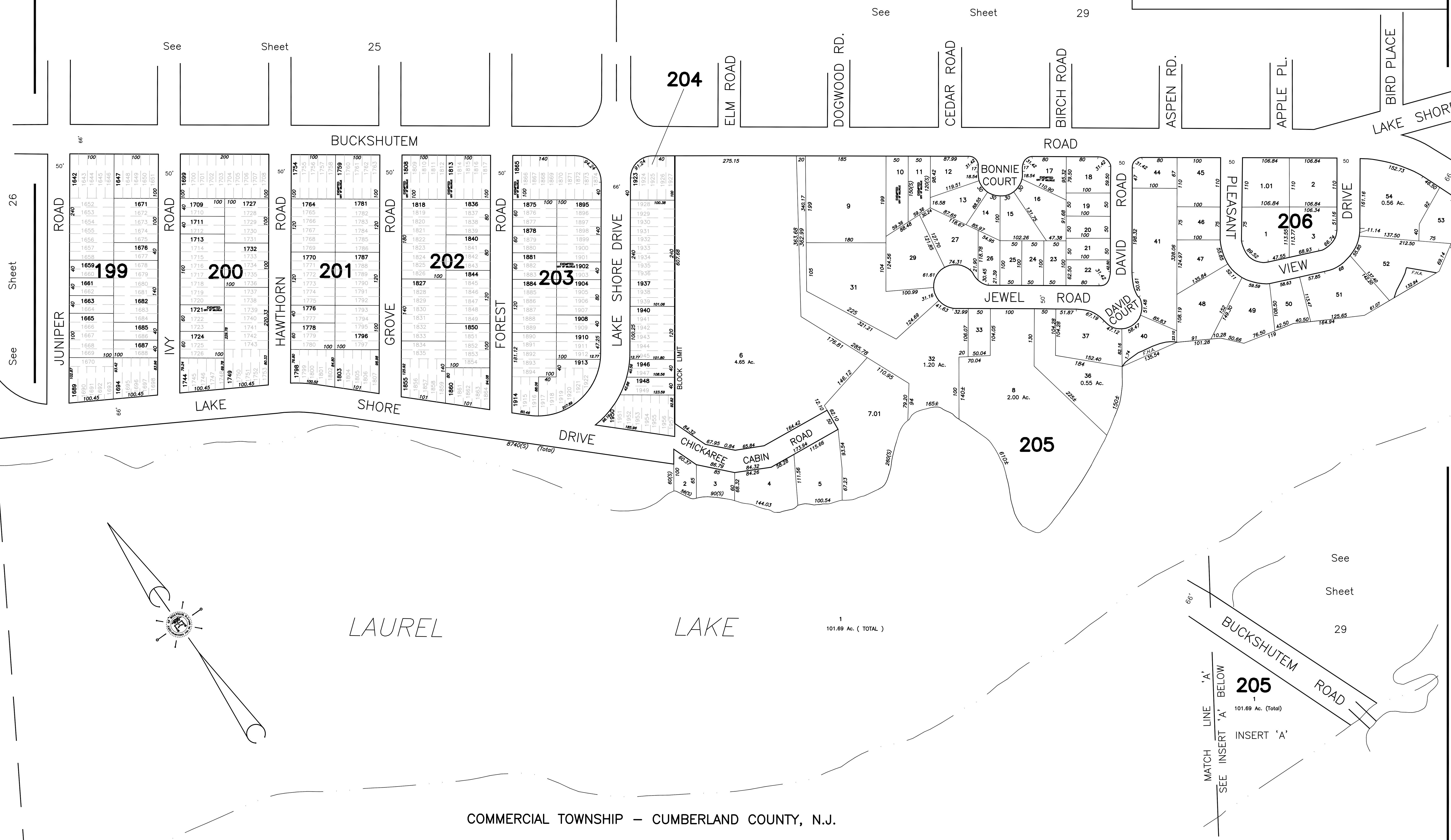


REVISIONS		
DATE	NAME	NUMBER
7/3/02	Robert H. Thomas Sr. N.J.S.	20371
10/28/02	Robert H. Thomas Sr. N.J.S.	20371
4/25/12	Block 205, Lot 27	20371
	Block 206, Lot 3	20371
4/17/13	Block 205, Lots 6 & 7	20371
6/09/13	Block 205, Lots 54 & 55	20371

NEW JERSEY DEPARTMENT OF THE TREASURY
 DIVISION OF TAXATION
 PROPERTY ADMINISTRATION
 APPROVED AS A TAX MAP PURSUANT TO THE AUTHORITY OF
 N.J.S.A. 54:15 & 54:20
 FOR THE DIRECTOR, DIVISION OF TAXATION
James J. Coll C.T.A.
 JAMES J. COLL, CHIEF, LOCAL ASSESSMENT COMPLIANCE
William H. Black C.T.A.
 WILLIAM H. BLACK, SUPERVISING ENGINEER UPL/CDB
 DATE: JAN 15 2002 SERIAL NO. 798

TAX ASSESSMENT MAP
CITY OF MILLVILLE
 CUMBERLAND COUNTY, NEW JERSEY
 SCALE: 1" = 100'
 JUNE 2001
ROBERT H. THOMAS, SR., N.J.S 20371
 2429 E. MAIN ST. MILLVILLE, NEW JERSEY



See Sheet 26

See Sheet 25

See Sheet 29

See Sheet 29

MATCH LINE 'A' BELOW
SEE INSERT 'A'

COMMERCIAL TOWNSHIP - CUMBERLAND COUNTY, N.J.

THIS SHEET IS A DIGITIZED COPY OF THE TAX MAP PREPARED BY ROBERT H. THOMAS SR., PLS AND DATED JUNE 2001. THE APPROVED ORIGINAL IS ON FILE IN THE CITY OF MILLVILLE MUNICIPAL ENGINEERS OFFICE.