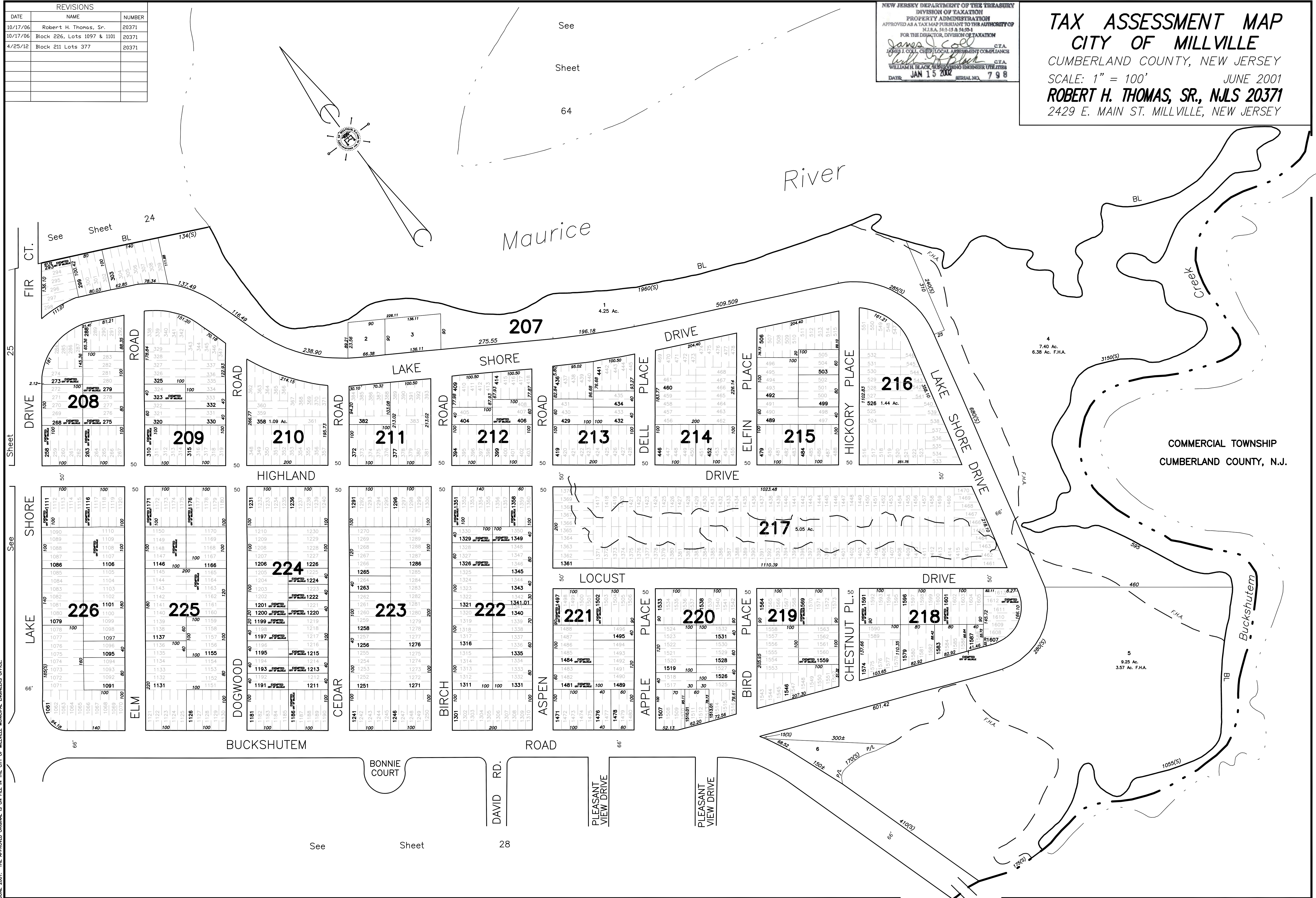
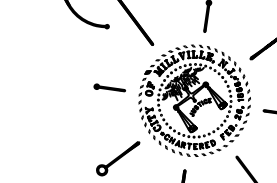


REVISIONS		
DATE	NAME	NUMBER
10/17/06	Robert H. Thomas, Sr.	20371
10/17/06	Block 226, Lots 1097 & 1101	20371
4/25/12	Block 211 Lots 377	20371

NEW JERSEY DEPARTMENT OF THE TREASURY  
 DIVISION OF TAXATION  
 PROPERTY ADMINISTRATION  
 APPROVED AS A TAX MAP PURSUANT TO THE AUTHORITY OF  
 N.J.A.C. 17:27 & 17:28  
 FOR THE DIRECTOR, DIVISION OF TAXATION  
*Jane J. Cole* C.T.A.  
*William H. Black* C.T.A.  
 DATE: JAN 15 2002 SERIAL NO. 798

**TAX ASSESSMENT MAP**  
**CITY OF MILLVILLE**  
 CUMBERLAND COUNTY, NEW JERSEY  
 SCALE: 1" = 100'  
 JUNE 2001  
**ROBERT H. THOMAS, SR., N.J.L.S 20371**  
 2429 E. MAIN ST. MILLVILLE, NEW JERSEY

See  
 Sheet  
 64



THIS SHEET IS A DIGITIZED COPY OF THE TAX MAP PREPARED BY ROBERT H. THOMAS SR., P.L.S AND DATED JUNE 2001. THE APPROVED ORIGINAL IS ON FILE IN THE CITY OF MILLVILLE MUNICIPAL ENGINEERS OFFICE.

COMMERCIAL TOWNSHIP  
 CUMBERLAND COUNTY, N.J.