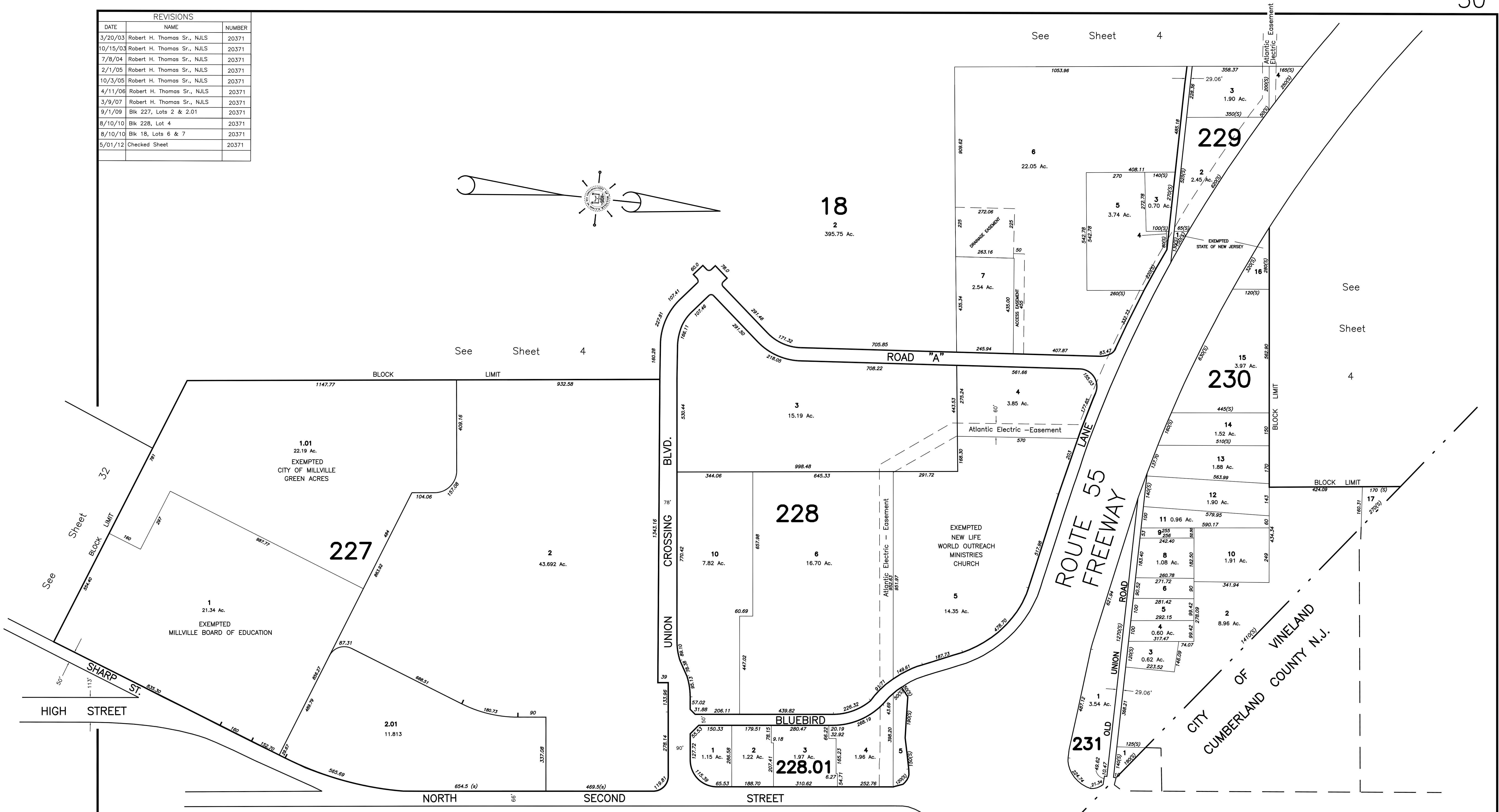
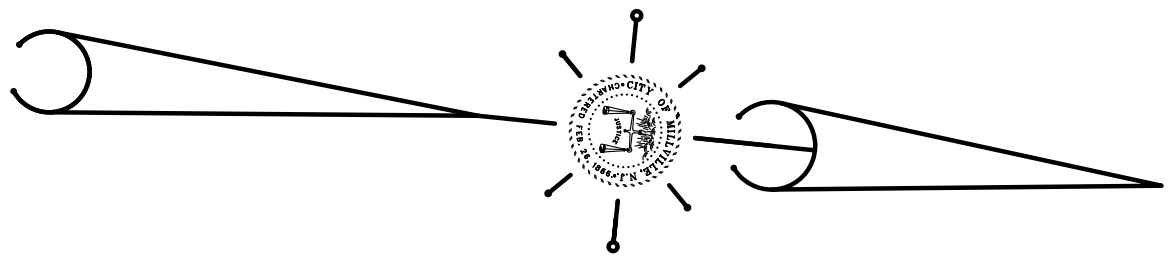


REVISIONS		
DATE	NAME	NUMBER
3/20/03	Robert H. Thomas Sr., NJLS	20371
10/15/03	Robert H. Thomas Sr., NJLS	20371
7/8/04	Robert H. Thomas Sr., NJLS	20371
2/1/05	Robert H. Thomas Sr., NJLS	20371
10/3/05	Robert H. Thomas Sr., NJLS	20371
4/11/06	Robert H. Thomas Sr., NJLS	20371
3/9/07	Robert H. Thomas Sr., NJLS	20371
9/1/09	Blk 227, Lots 2 & 2.01	20371
8/10/10	Blk 228, Lot 4	20371
8/10/10	Blk 18, Lots 6 & 7	20371
5/01/12	Checked Sheet	20371



**TAX ASSESSMENT MAP**  
**CITY OF MILLVILLE**  
 CUMBERLAND COUNTY, NEW JERSEY  
 SCALE: 1" = 200' JUNE 2001  
**ROBERT H. THOMAS, SR., NJLS 20371**  
 2429 E. MAIN ST. MILLVILLE, NEW JERSEY

NEW JERSEY DEPARTMENT OF THE TREASURY  
 DIVISION OF TAXATION  
 PROPERTY ADMINISTRATION  
 APPROVED AS A TAX MAP PURSUANT TO THE AUTHORITY OF  
 N.J.S.A. 54:15-15 & 54:5-91  
 FOR THE DIRECTOR, DIVISION OF TAXATION  
*James J. Coll* C.T.A.  
 JAMES J. COLL, CHIEF LOCAL ASSESSMENT COMPLIANCE  
*William H. Black* C.T.A.  
 WILLIAM H. BLACK, SUPERVISOR ENGINEER UTILITIES  
 DATE: JAN 15 2002 SERIAL NO. 798

THIS SHEET IS A DIGITIZED COPY OF THE TAX MAP PREPARED BY ROBERT H. THOMAS SR., PLS AND DATED JUNE 2001. THE APPROVED ORIGINAL IS ON FILE IN THE CITY OF MILLVILLE MUNICIPAL ENGINEERS OFFICE.