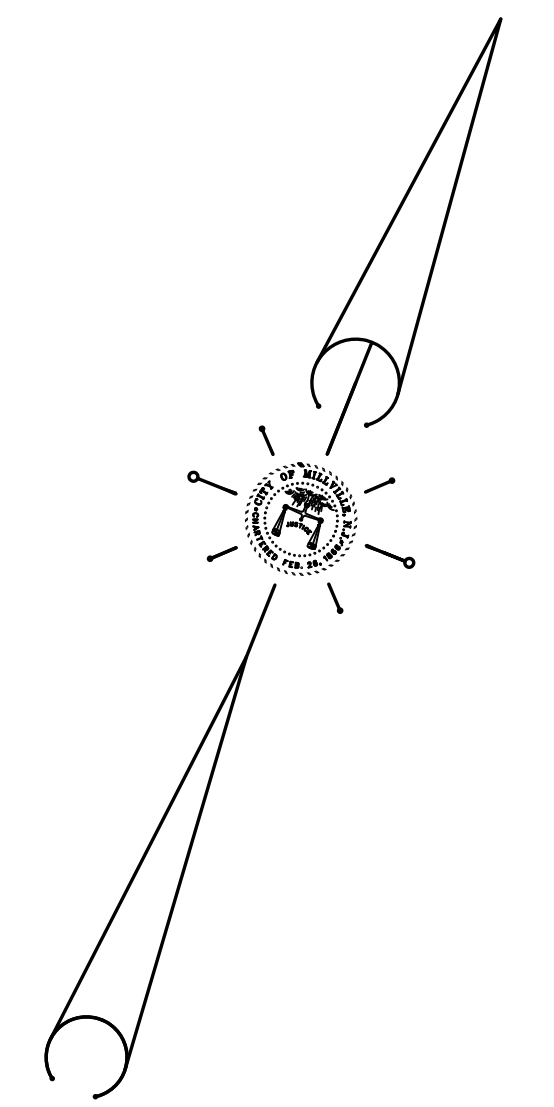
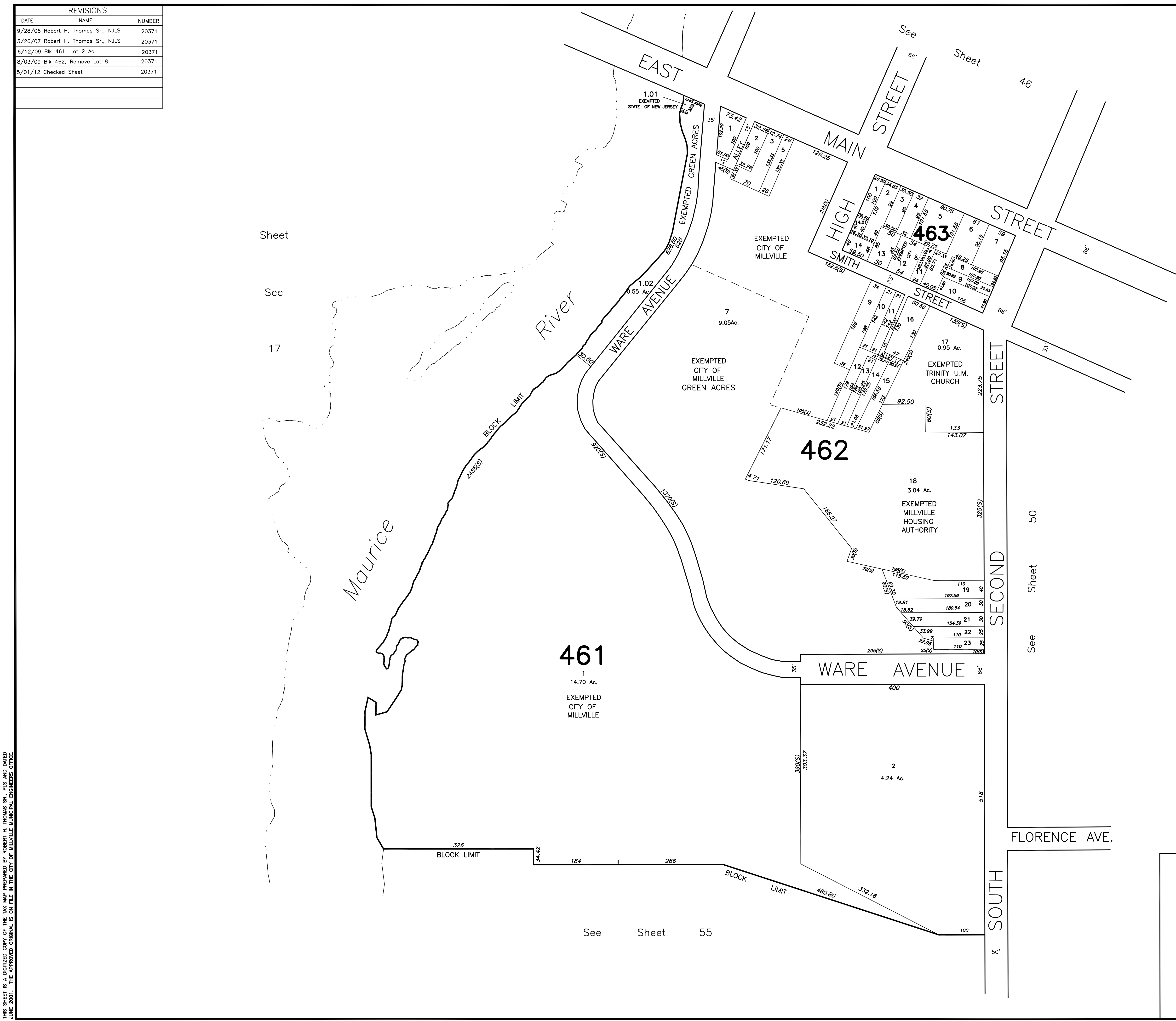


REVISIONS		
DATE	NAME	NUMBER
9/28/06	Robert H. Thomas Sr., N.J.S.	20371
3/26/07	Robert H. Thomas Sr., N.J.S.	20371
6/12/09	Blk 461, Lot 2 Ac.	20371
8/03/09	Blk 462, Remove Lot 8	20371
5/01/12	Checked Sheet	20371

Sheet  
See  
17

See  
Sheet  
50

See  
Sheet  
55



THIS SHEET IS A DIGITIZED COPY OF THE TAX MAP PREPARED BY ROBERT H. THOMAS SR., P.E. AND DATED JUNE 2001. THE APPROVED ORIGINAL IS ON FILE IN THE CITY OF MILLVILLE MUNICIPAL ENGINEERS OFFICE.

NEW JERSEY DEPARTMENT OF THE TREASURY  
 DIVISION OF TAXATION  
 PROPERTY ADMINISTRATION  
 APPROVED AS A TAX MAP PURSUANT TO THE AUTHORITY OF  
 N.J.S.A. 54:1-15 & 54:29-1  
 FOR THE DIRECTOR, DIVISION OF TAXATION  
*James J. Coll* C.T.A.  
 JAMES J. COLL, CHIEF, LOCAL ASSESSMENT COMPLIANCE  
*William H. Black* C.T.A.  
 WILLIAM H. BLACK, SUPERVISING ENGINEER UTILITIES  
 DATE: JAN 15 2002 SERIAL NO. 798

**TAX ASSESSMENT MAP**  
**CITY OF MILLVILLE**  
 CUMBERLAND COUNTY, NEW JERSEY  
 SCALE: 1" = 100' JUNE 2001  
**ROBERT H. THOMAS, SR., N.J.S. 20371**  
 2429 E. MAIN ST. MILLVILLE, NEW JERSEY