

REVISIONS		
DATE	NAME	NUMBER
5/15/03	Robert H. Thomas Sr., NJLS	20371
3/26/04	Robert H. Thomas Sr., NJLS	20371
7/22/05	Robert H. Thomas Sr., NJLS	20371
	Newcombtown Crossing	
10/11/05	Robert H. Thomas Sr., NJLS	20371
8/1/06	Robert H. Thomas Sr., NJLS	20371
10/4/06	Robert H. Thomas Sr., NJLS	20371
3/26/07	Robert H. Thomas Sr., NJLS	20371
8/13/13	Blk. 500, Lots 24 & 24.01	20371
5/28/14	Blk. 494, Lots 22 & 23	20371

See Sheet 45

See Sheet 44

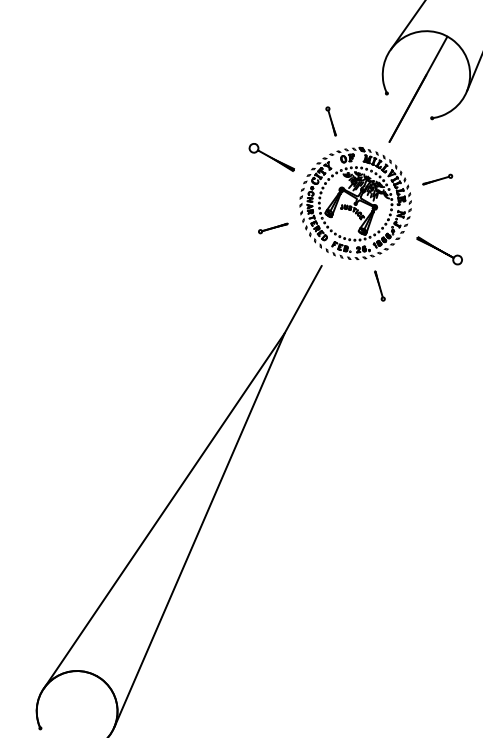
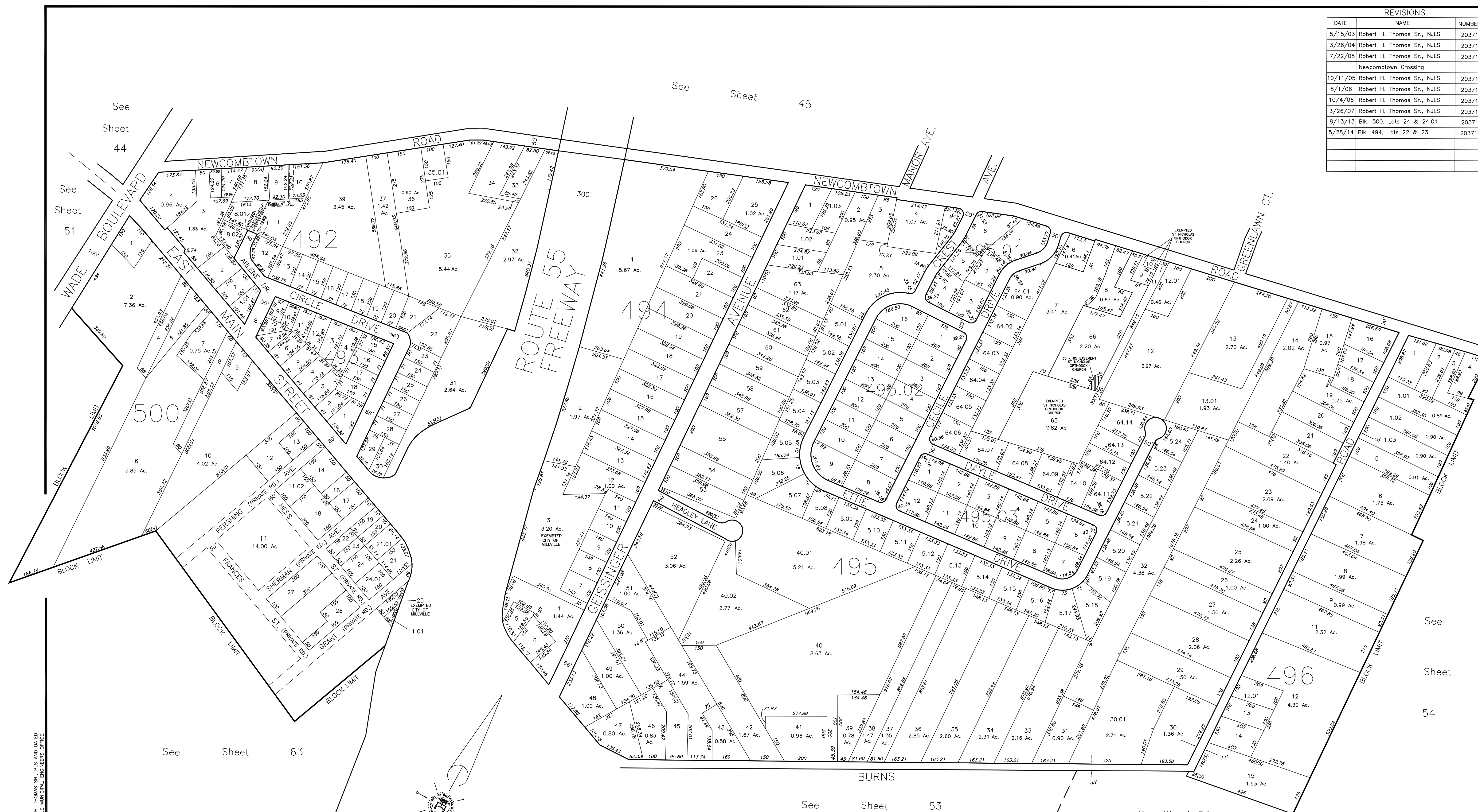
See Sheet 51

See Sheet 63

See Sheet 53

See Sheet 54

See Sheet 54



THIS SHEET IS A DIGITIZED COPY OF THE TAX MAP PREPARED BY ROBERT H. THOMAS SR., PLS AND DATED JUNE 2001. THE APPROVED ORIGINAL IS ON FILE IN THE CITY OF MILLVILLE MUNICIPAL ENGINEERS OFFICE.

NEW JERSEY DEPARTMENT OF THE TREASURY  
 DIVISION OF TAXATION  
 PROPERTY ADMINISTRATION  
 APPROVED AS A TAX MAP PURSUANT TO THE AUTHORITY OF  
 N.J.S.A. 54:1-15 & 54:3-1  
 FOR THE DIRECTOR, DIVISION OF TAXATION  
*James J. Coyle* C.T.A.  
 JAMES J. COYLE CHIEF LEGAL ASSISTANT COMPLIANCE  
*William H. Black* C.T.A.  
 WILLIAM H. BLACK SUPERVISING ENGINEER UTILITIES  
 DATE: JAN 15 2012 SERIAL NO. 798

TAX ASSESSMENT MAP  
 CITY OF MILLVILLE  
 CUMBERLAND COUNTY, NEW JERSEY  
 SCALE: 1" = 200'  
 JUNE 2001  
 ROBERT H. THOMAS, SR., NJLS 20371  
 2429 E. MAIN ST. MILLVILLE, NEW JERSEY