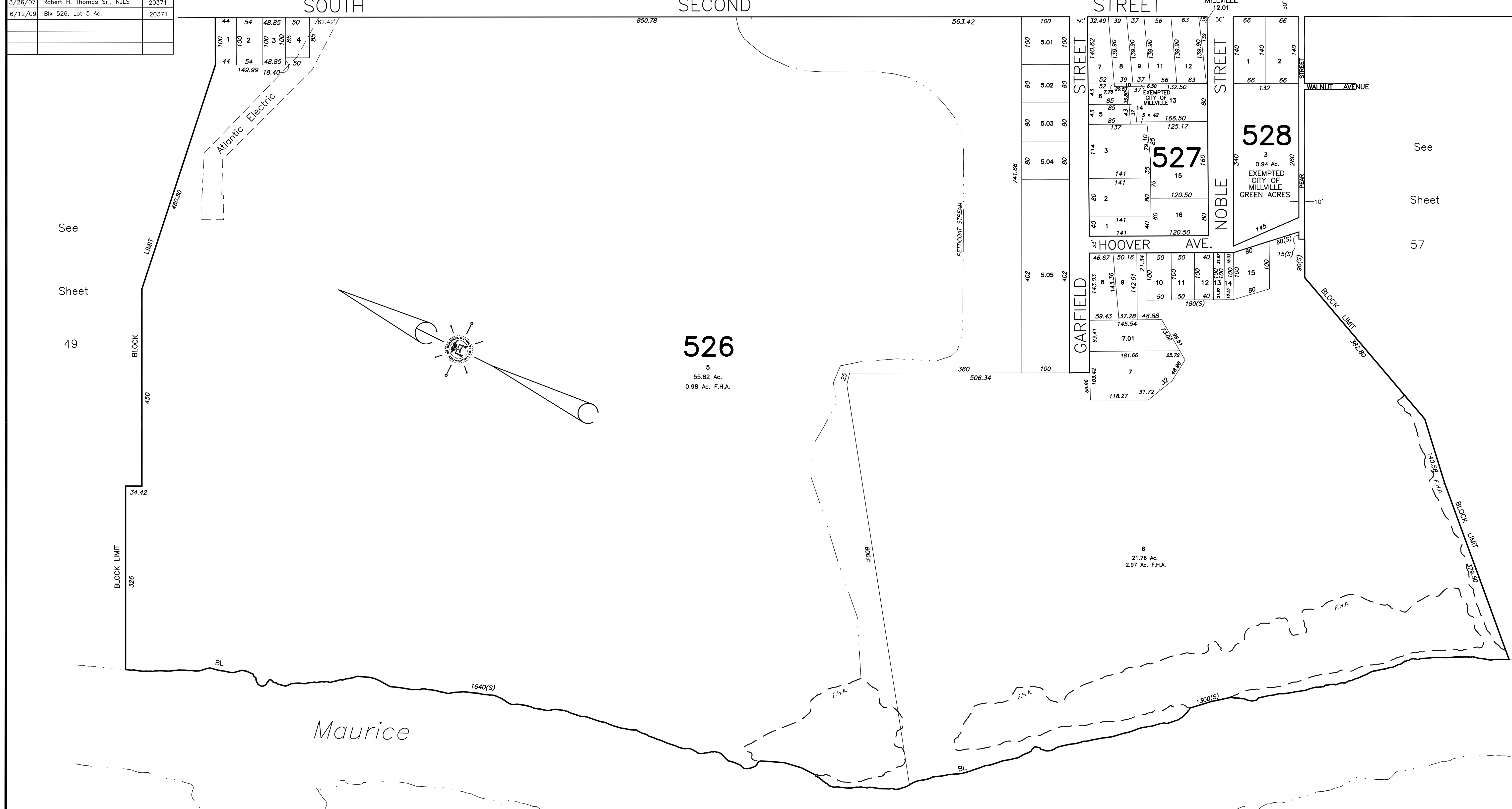


REVISIONS		
DATE	NAME	NUMBER
1/21/03	Robert H. Thomas Sr., N.J.S.	20371
9/22/04	Robert H. Thomas Sr., N.J.S.	20371
7/11/05	Robert H. Thomas Sr., N.J.S.	20371
3/26/07	Robert H. Thomas Sr., N.J.S.	20371
6/12/09	Blk 526, Lot 5 Ac.	20371

Sheet 50 CONRAIL RAILROAD MAYLIN ST. See Sheet 56 KATES BLVD. EXEMPTED CITY OF MILLVILLE 12.01



See Sheet 49

See Sheet 57

Maurice River

TAX ASSESSMENT MAP
CITY OF MILLVILLE
 CUMBERLAND COUNTY, NEW JERSEY
 SCALE: 1" = 100' JUNE 2001
ROBERT H. THOMAS, SR., N.J.S. 20371
 2429 E. MAIN ST. MILLVILLE, NEW JERSEY

NEW JERSEY DEPARTMENT OF THE TREASURY
 DIVISION OF TAXATION
 PROPERTY ADMINISTRATION
 APPROVED AS A TAX MAP PURSUANT TO THE AUTHORITY OF
 N.J.A.C. 17:27-15 & 24.9-91
 FOR THE DIRECTOR, DIVISION OF TAXATION
James J. Coll C.T.A.
 JAMES J. COLL, CHIEF LOCAL ASSESSMENT COMPLIANCE
William H. Black C.T.A.
 WILLIAM H. BLACK, SUPERVISING ENGINEER UTILITIES
 DATE: JAN 15 2002 SERIAL NO. 798

THIS SHEET IS A DIGITIZED COPY OF THE TAX MAP PREPARED BY ROBERT H. THOMAS SR., PLS AND DATED JUNE 2001. THE APPROVED ORIGINAL IS ON FILE IN THE CITY OF MILLVILLE MUNICIPAL ENGINEERS OFFICE.