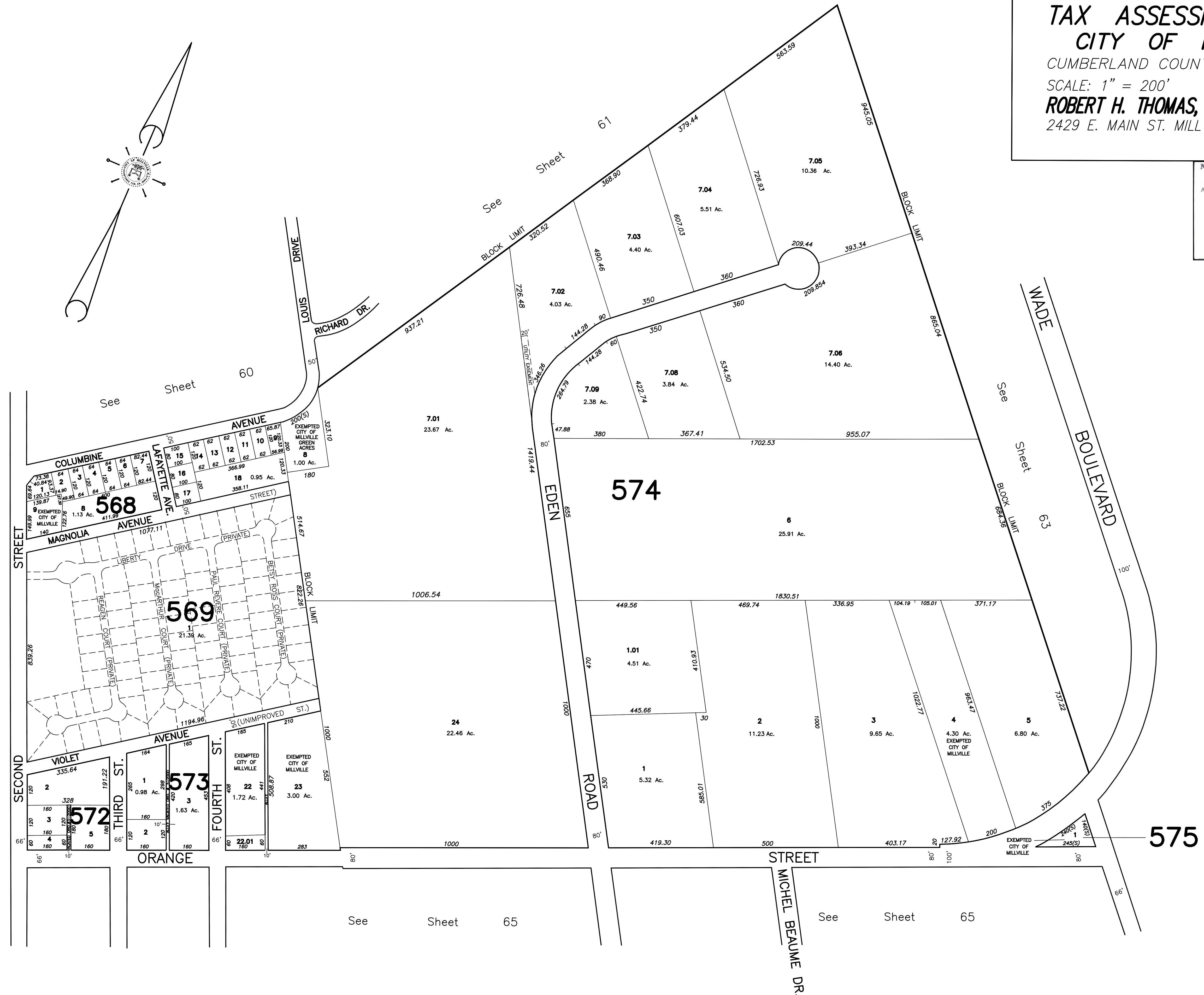
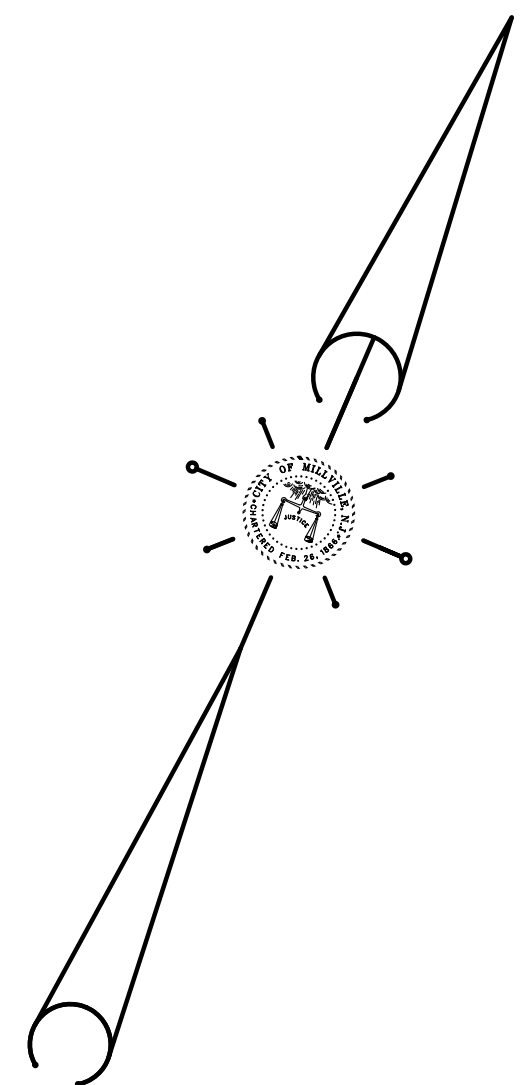


TAX ASSESSMENT MAP CITY OF MILLVILLE

CUMBERLAND COUNTY, NEW JERSEY
SCALE: 1" = 200' JUNE 2001
ROBERT H. THOMAS, SR., NJLS 20371
2429 E. MAIN ST. MILLVILLE, NEW JERSEY

NEW JERSEY DEPARTMENT OF THE TREASURY
DIVISION OF TAXATION
PROPERTY ADMINISTRATION
APPROVED AS A TAX MAP PURSUANT TO THE AUTHORITY OF
N.J.S.A. 54:1-15 & 54:50-1
FOR THE DIRECTOR, DIVISION OF TAXATION
JAMES J. COLL C.T.A.
JAMES J. COLL, CHIEF LOCAL ASSESSMENT COMPLIANCE
William H. Black C.T.A.
WILLIAM H. BLACK, SUPERVISING ENGINEER UTILITIES
DATE: JAN 15 2001 SERIAL NO. 798

REVISIONS		
DATE	NAME	NUMBER
11/19/04	Robert H. Thomas Sr., NJLS	20371
10/3/05	Robert H. Thomas Sr., NJLS	20371
5/01/12	Checked Sheet	20371



See Sheet 59

See Sheet 65

See Sheet 65

THIS SHEET IS A DIGITIZED COPY OF THE TAX MAP PREPARED BY ROBERT H. THOMAS SR., PLS AND DATED JUNE 2001. THE APPROVED ORIGINAL IS ON FILE IN THE CITY OF MILLVILLE MUNICIPAL ENGINEERS OFFICE.