

See Sheet 24

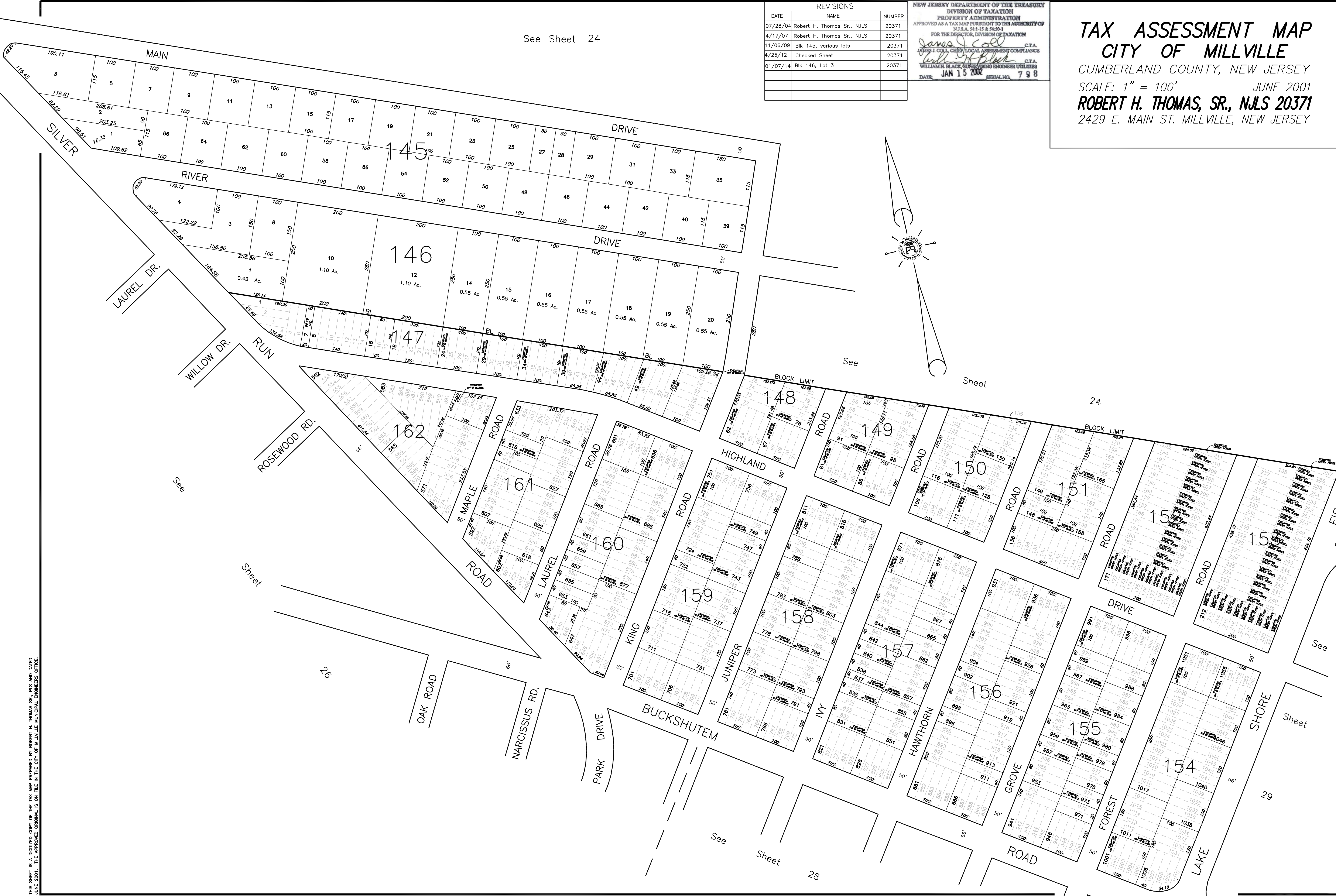
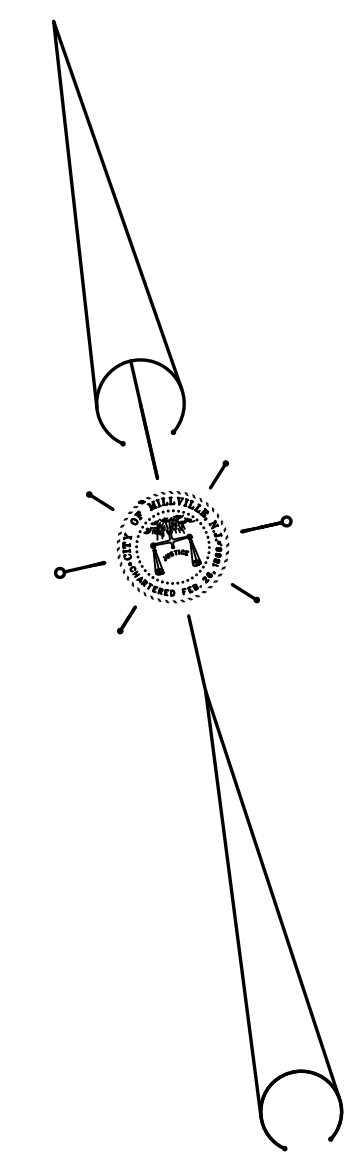
REVISIONS		
DATE	NAME	NUMBER
07/28/04	Robert H. Thomas Sr., NLS	20371
4/17/07	Robert H. Thomas Sr., NLS	20371
11/06/09	Blk 145, various lots	20371
4/25/12	Checked Sheet	20371
01/07/14	Blk 146, Lot 3	20371

NEW JERSEY DEPARTMENT OF THE TREASURY  
 DIVISION OF TAXATION  
 PROPERTY ADMINISTRATION  
 APPROVED AS A TAX MAP PURSUANT TO THE AUTHORITY OF  
 N.J.A.C. 17:27 & 17:28  
 FOR THE DIRECTOR, DIVISION OF TAXATION

*James J. Coll* C.T.A.  
 JAMES J. COLL, CHIEF LOCAL ASSESSMENT COMPLIANCE  
*William H. Black* C.T.A.  
 WILLIAM H. BLACK, SUPERVISING ENGINEER UTILITIES

DATE: JAN 15 2012 SERIAL NO. 798

**TAX ASSESSMENT MAP**  
**CITY OF MILLVILLE**  
 CUMBERLAND COUNTY, NEW JERSEY  
 SCALE: 1" = 100' JUNE 2001  
**ROBERT H. THOMAS, SR., NLS 20371**  
 2429 E. MAIN ST. MILLVILLE, NEW JERSEY



THIS SHEET IS A DIGITIZED COPY OF THE TAX MAP PREPARED BY ROBERT H. THOMAS SR., PLS AND DATED JUNE 2001. THE APPROVED ORIGINAL IS ON FILE IN THE CITY OF MILLVILLE MUNICIPAL ENGINEERS OFFICE.