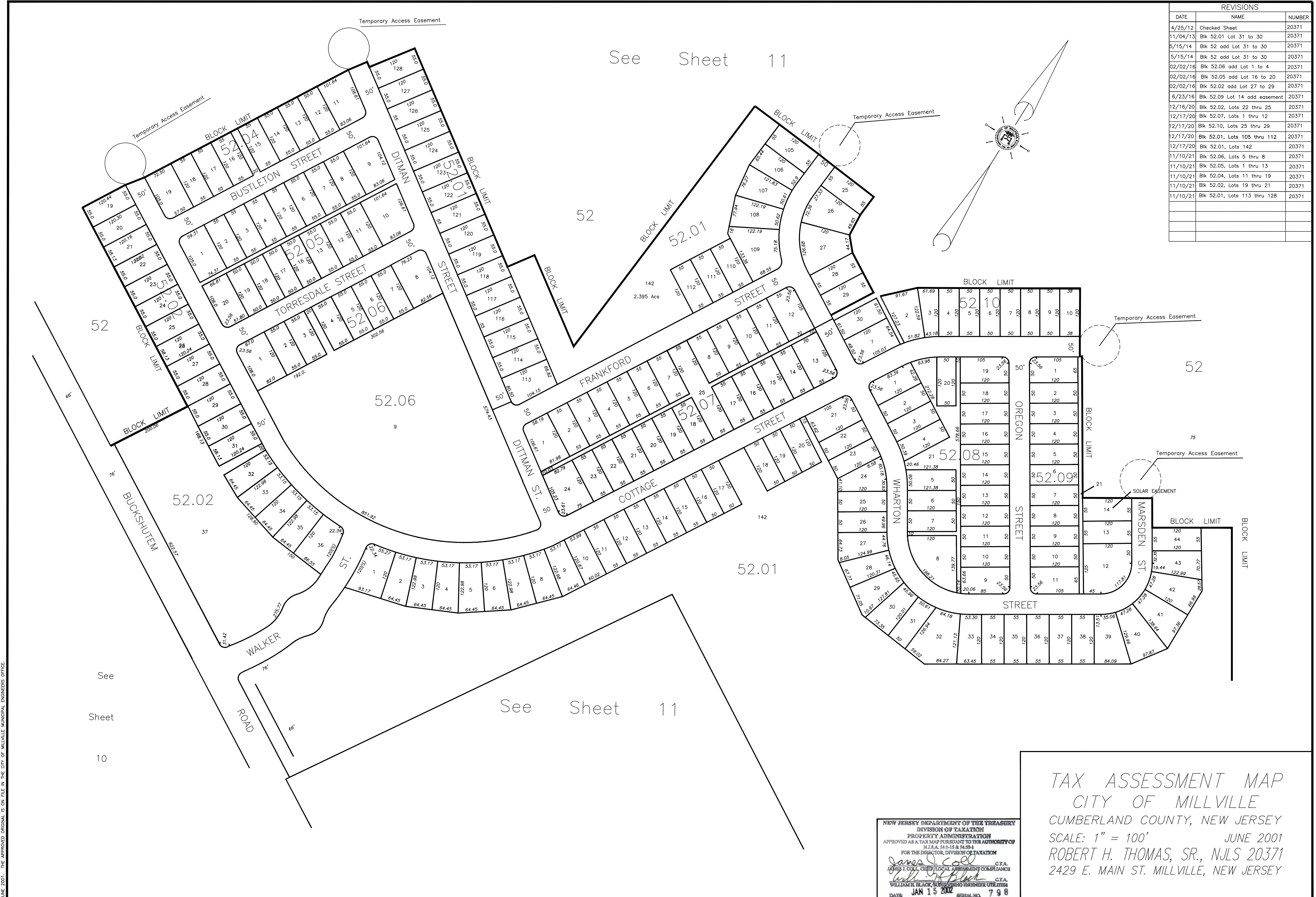


REVISIONS		
DATE	NAME	NUMBER
4/25/12	Checked Sheet	20371
11/04/13	Blk 52.01 Lot 31 to 30	20371
5/15/14	Blk 52 add Lot 31 to 30	20371
5/15/14	Blk 52 add Lot 31 to 30	20371
02/02/16	Blk 52.06 add Lot 1 to 4	20371
02/02/16	Blk 52.05 add Lot 16 to 20	20371
02/02/16	Blk 52.02 add Lot 27 to 29	20371
6/23/16	Blk 52.09 Lot 14 add easement	20371
12/16/20	Blk 52.02, Lots 22 thru 25	20371
12/17/20	Blk 52.07, Lots 1 thru 12	20371
12/17/20	Blk 52.10, Lots 25 thru 29	20371
12/17/20	Blk 52.01, Lots 105 thru 112	20371
12/17/20	Blk 52.01, Lots 142	20371
11/10/21	Blk 52.06, Lots 5 thru 8	20371
11/10/21	Blk 52.05, Lots 1 thru 13	20371
11/10/21	Blk 52.04, Lots 11 thru 19	20371
11/10/21	Blk 52.02, Lots 19 thru 21	20371
11/10/21	Blk 52.01, Lots 113 thru 128	20371



NEW JERSEY DEPARTMENT OF THE TREASURY  
 DIVISION OF TAXATION  
 PROPERTY ADMINISTRATION  
 APPROVED AS A TAX MAP PURSUANT TO THE AUTHORITY OF  
 N.J.S.A. 54:15-15 & 54:50-1  
 FOR THE DIRECTOR, DIVISION OF TAXATION  
*James J. Coll* CTA  
 JAMES J. COLL, CHIEF LOCAL ASSESSMENT COMPLIANCE  
*William H. Black* CTA  
 WILLIAM H. BLACK, SUPERVISOR ENGINEER UTILITIES  
 DATE: JAN 15 2002 SERIAL NO. 798

TAX ASSESSMENT MAP  
 CITY OF MILLVILLE  
 CUMBERLAND COUNTY, NEW JERSEY  
 SCALE: 1" = 100'  
 JUNE 2001  
 ROBERT H. THOMAS, SR., NJLS 20371  
 2429 E. MAIN ST. MILLVILLE, NEW JERSEY

THIS SHEET IS A DIGITIZED COPY OF THE TAX MAP PREPARED BY ROBERT H. THOMAS SR., PLS AND DATED JUNE 2001. THE APPROVED ORIGINAL IS ON FILE IN THE CITY OF MILLVILLE MUNICIPAL ENGINEERS OFFICE.