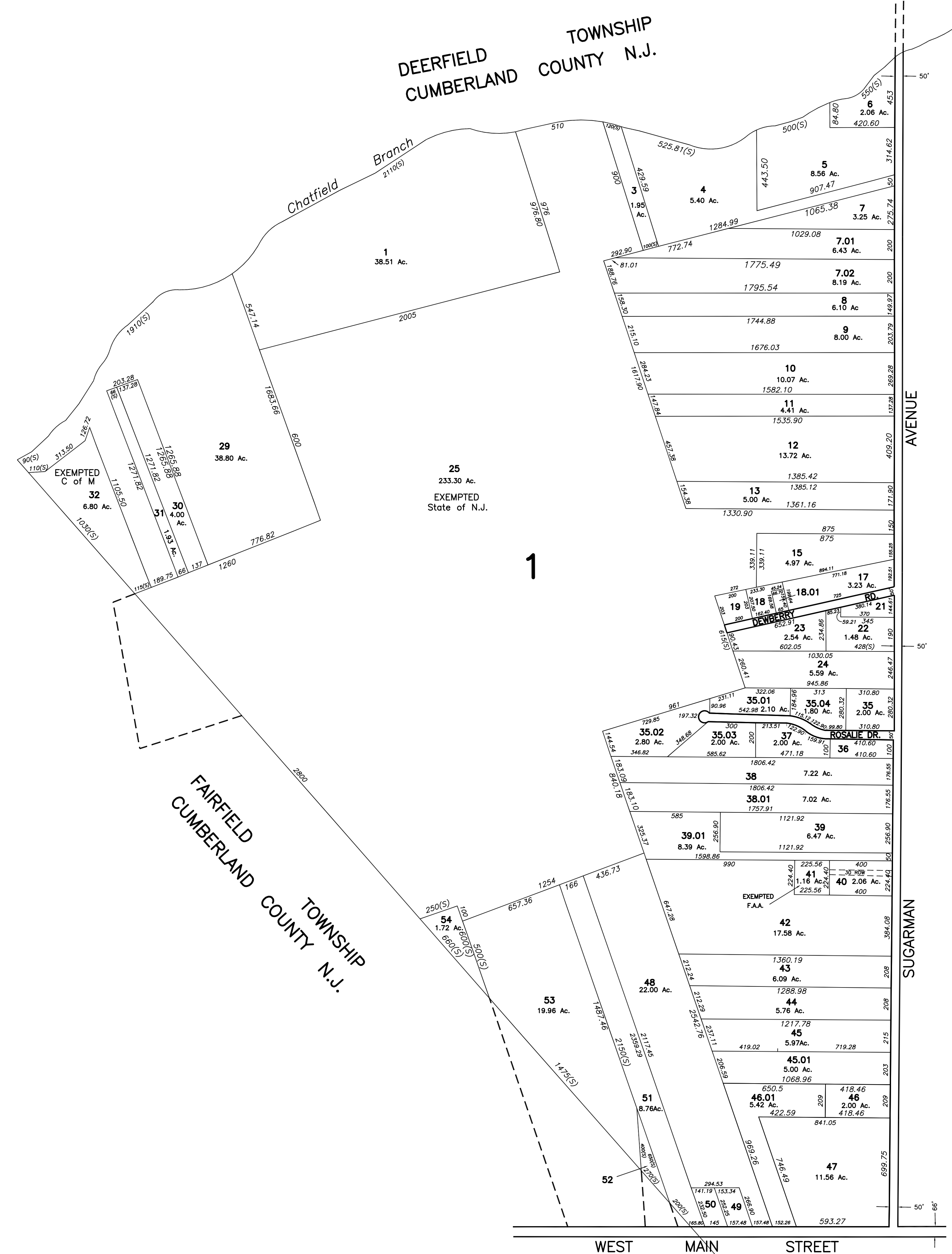
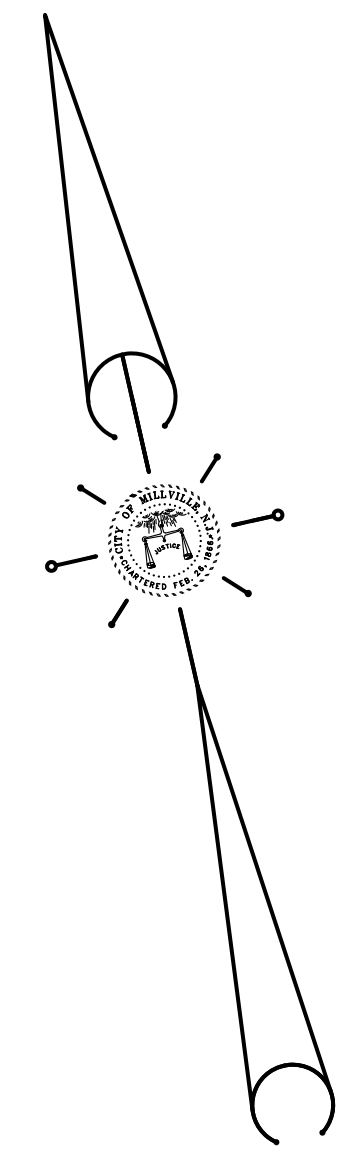


REVISIONS		
DATE	NAME	NUMBER
4/18/12	Sheet Check RHT	20371
8/13/13	Blk 1, Lot 46 & 46.01	20371



See
Sheet
2

See Sheet 7

THIS SHEET IS A DIGITIZED COPY OF THE TAX MAP PREPARED BY ROBERT H. THOMAS, SR., PLS AND DATED JUNE 2001. THE APPROVED ORIGINAL IS ON FILE IN THE CITY OF MILLVILLE MUNICIPAL ENGINEERS OFFICE.

TAX ASSESSMENT MAP CITY OF MILLVILLE

CUMBERLAND COUNTY, NEW JERSEY
 SCALE: 1" = 400' JUNE 2001
ROBERT H. THOMAS, SR., N.J.LS 20371
 2429 E. MAIN ST. MILLVILLE, NEW JERSEY

NEW JERSEY DEPARTMENT OF THE TREASURY
 DIVISION OF TAXATION
 PROPERTY ADMINISTRATION
 APPROVED AS A TAX MAP PURSUANT TO THE AUTHORITY OF
 N.J.S.A. 54:1-15 & 54:5-1
 FOR THE DIRECTOR, DIVISION OF TAXATION
Jana J. Coll C.T.A.
 JANA J. COLL, CHIEF LOCAL ASSESSMENT COMPLIANCE
William H. Black C.T.A.
 WILLIAM H. BLACK, SUPERVISING ENGINEER UTILITIES
 DATE: JAN 15 2002 SERIAL NO. 798