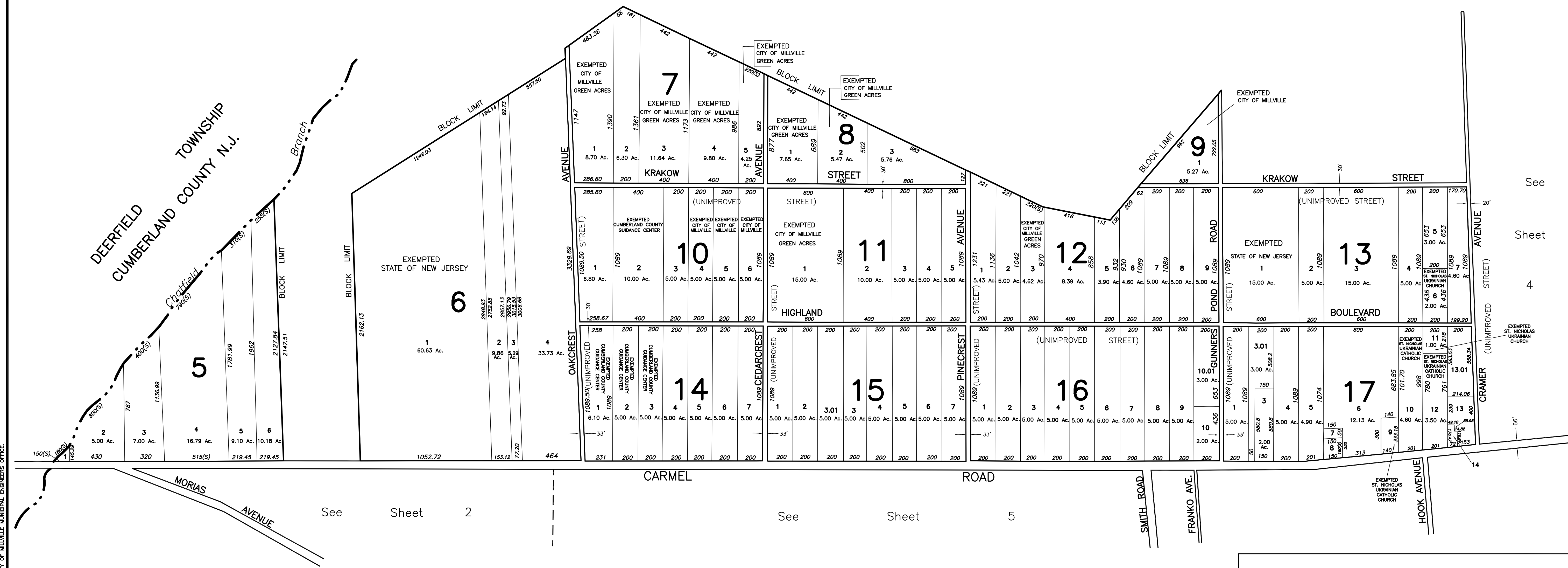
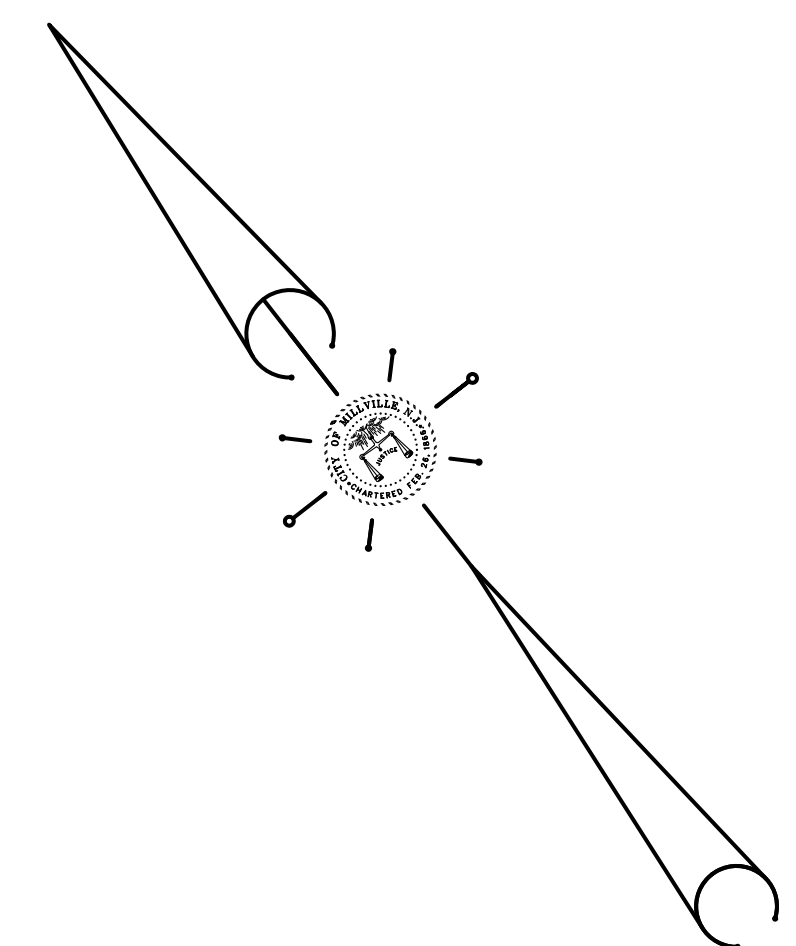


REVISIONS		
DATE	NAME	NUMBER
3/29/07	Robert H. Thomas Sr., N.J.S.	20371
3/29/07	Sheet Check	20371

See Sheet 4

See Sheet 4



See Sheet 2

See Sheet 5

See Sheet 4

THIS SHEET IS A DIGITIZED COPY OF THE TAX MAP PREPARED BY ROBERT H. THOMAS SR., P.L.S. AND DATED JUNE 2001. THE APPROVED ORIGINAL IS ON FILE IN THE CITY OF MILLVILLE MUNICIPAL ENGINEERS OFFICE.

NEW JERSEY DEPARTMENT OF THE TREASURY
 DIVISION OF TAXATION
 PROPERTY ADMINISTRATION
 APPROVED AS A TAX MAP PURSUANT TO THE AUTHORITY OF
 N.J.S.A. 54:1-15 & 54:9-1
 FOR THE DIRECTOR, DIVISION OF TAXATION
Jana J. Cole C.T.A.
William H. Black C.T.A.
 WILLIAM H. BLACK, SUPERVISING ENGINEER UTILITIES
 DATE: JAN 15 2002 SERIAL NO. 798

TAX ASSESSMENT MAP
CITY OF MILLVILLE
 CUMBERLAND COUNTY, NEW JERSEY
 SCALE: 1" = 400'
 JUNE 2001
ROBERT H. THOMAS, SR., N.J.S 20371
 2429 E. MAIN ST. MILLVILLE, NEW JERSEY