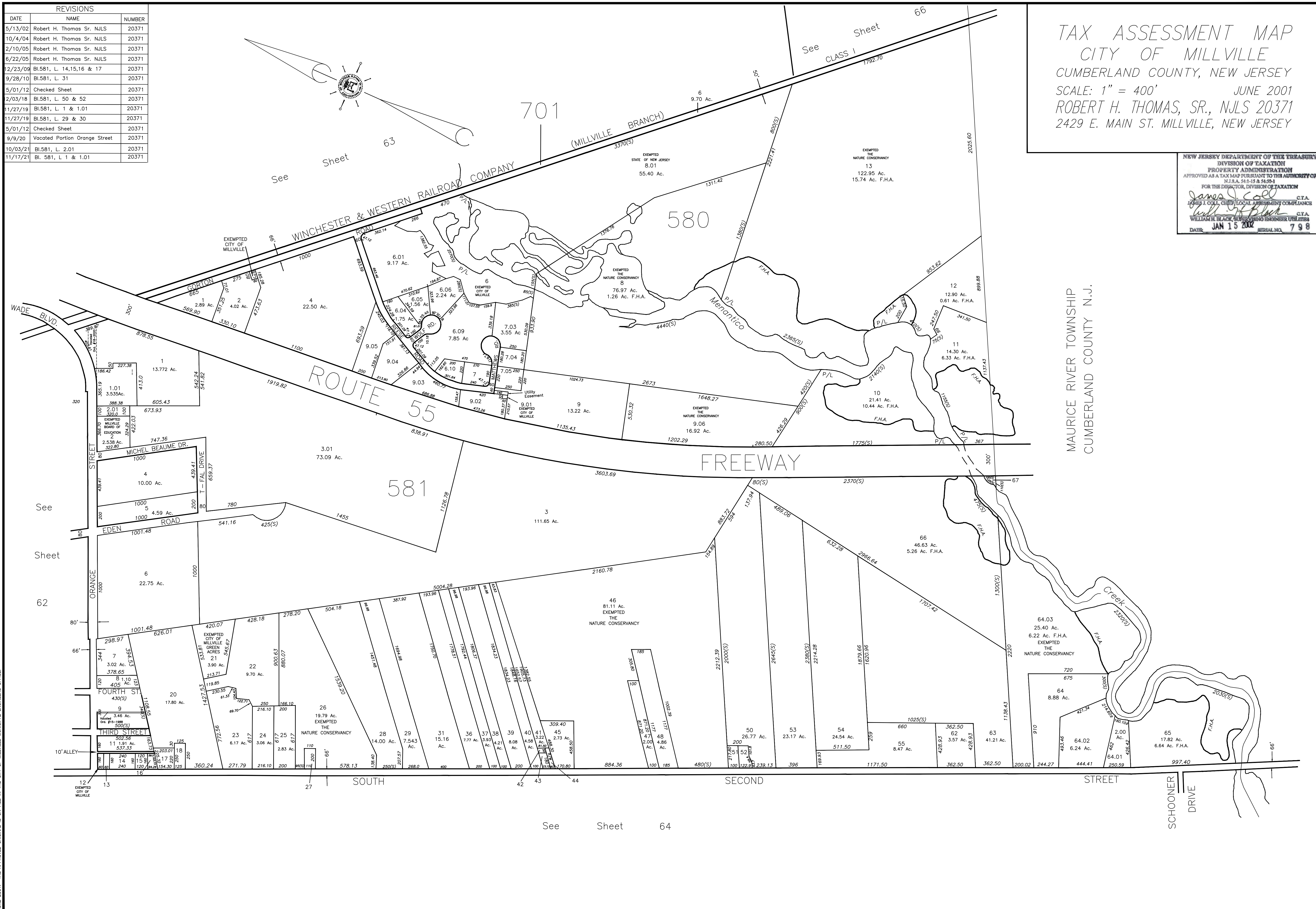


REVISIONS		
DATE	NAME	NUMBER
5/13/02	Robert H. Thomas Sr. NJLS	20371
10/4/04	Robert H. Thomas Sr. NJLS	20371
2/10/05	Robert H. Thomas Sr. NJLS	20371
6/22/05	Robert H. Thomas Sr. NJLS	20371
12/23/09	Bl.581, L. 14,15,16 & 17	20371
9/28/10	Bl.581, L. 31	20371
5/01/12	Checked Sheet	20371
2/03/18	Bl.581, L. 50 & 52	20371
11/27/19	Bl.581, L. 1 & 1.01	20371
11/27/19	Bl.581, L. 29 & 30	20371
5/01/12	Checked Sheet	20371
9/9/20	Vacated Portion Orange Street	20371
10/03/21	Bl.581, L. 2.01	20371
11/17/21	Bl. 581, L 1 & 1.01	20371



TAX ASSESSMENT MAP
 CITY OF MILLVILLE
 CUMBERLAND COUNTY, NEW JERSEY
 SCALE: 1" = 400'
 JUNE 2001
 ROBERT H. THOMAS, SR., NJLS 20371
 2429 E. MAIN ST. MILLVILLE, NEW JERSEY

NEW JERSEY DEPARTMENT OF THE TREASURY
 DIVISION OF TAXATION
 PROPERTY ADMINISTRATION
 APPROVED AS A TAX MAP PURSUANT TO THE AUTHORITY OF
 N.J.S.A. 54:13 & 54:9-1
 FOR THE DIRECTOR, DIVISION OF TAXATION
James J. Coll C.T.A.
 JAMES J. COLL, CHIEF, LOCAL ASSESSMENT COMPLIANCE
William H. Black C.T.A.
 WILLIAM H. BLACK, SUPERVISING ENGINEER UTILITIES
 DATE: JAN 15 2002 SERIAL NO. 798

THIS SHEET IS A DIGITIZED COPY OF THE TAX MAP PREPARED BY ROBERT H. THOMAS SR., PLS AND DATED JUNE 2001. THE APPROVED ORIGINAL IS ON FILE IN THE CITY OF MILLVILLE MUNICIPAL ENGINEERS OFFICE.