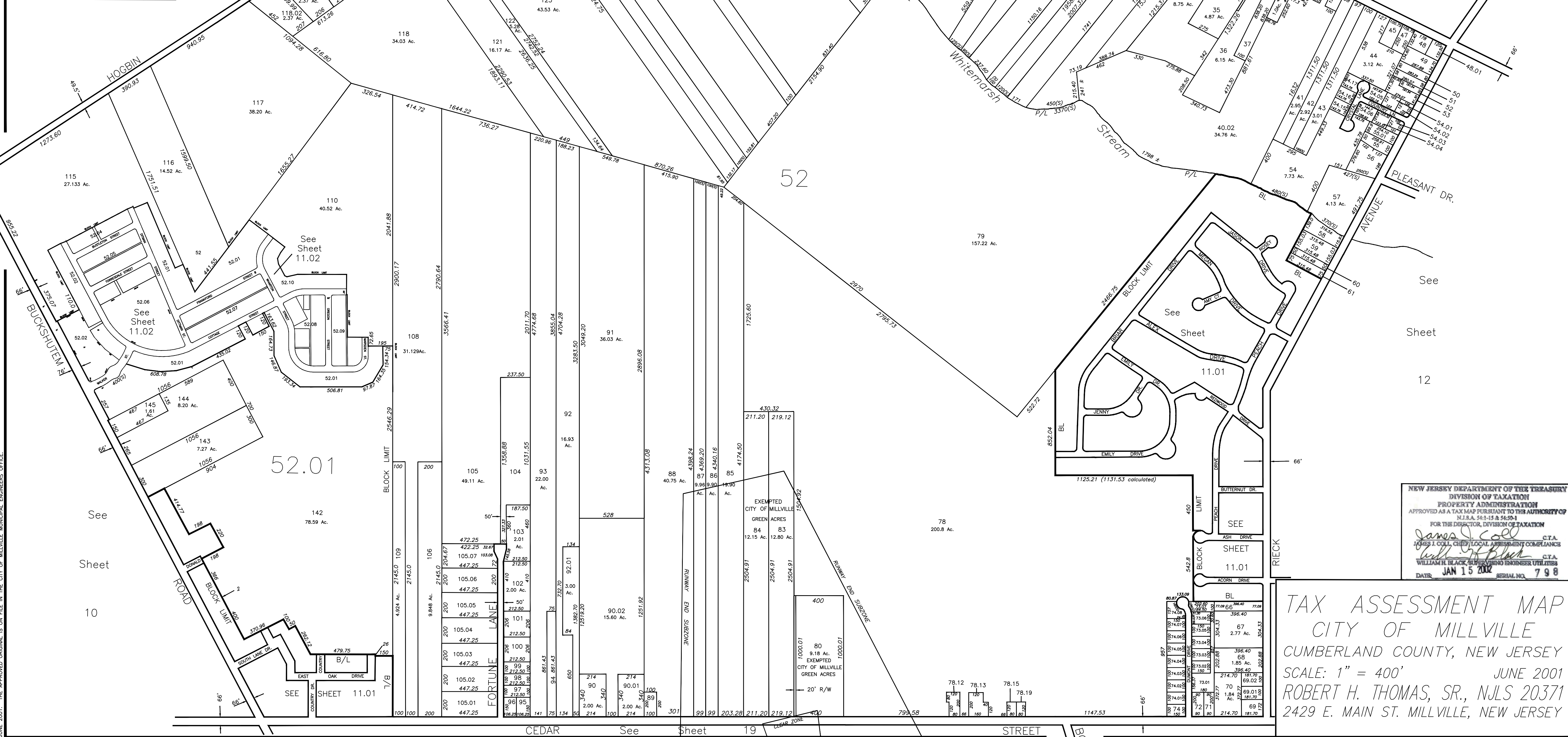


REVISIONS		
DATE	NAME	NUMBER
2/8/02	Robert H. Thomas Sr., N.J.L.S.	20371
3/21/02	Robert H. Thomas Sr., N.J.L.S.	20371
4/30/02	Robert H. Thomas Sr., N.J.L.S.	20371
5/29/02	Robert H. Thomas Sr., N.J.L.S.	20371
10/11/02	Robert H. Thomas Sr., N.J.L.S.	20371
10/28/02	Robert H. Thomas Sr., N.J.L.S.	20371
3/31/03	Robert H. Thomas Sr., N.J.L.S.	20371
6/1/03	Robert H. Thomas Sr., N.J.L.S.	20371
12/22/04	Robert H. Thomas Sr., N.J.L.S.	20371
2/10/05	Robert H. Thomas Sr., N.J.L.S.	20371
4/25/05	Robert H. Thomas Sr., N.J.L.S.	20371
8/30/06	Robert H. Thomas Sr., N.J.L.S.	20371
10/31/07	Robert H. Thomas Sr., N.J.L.S.	20371
	Four Seasons - Phase 1	20371
8/14/09	Blk 52, Lots 106,108 & 109	20371
2/10/10	Blk 52, Lots 80, 83 & 84	20371
4/12/10	Blk 52, Lots 38 & 40.02	20371
4/25/12	Blk 52, Lot 93	20371
10/02/13	Blk 52, Lot 78	20371
8/13/14	Blk 52, Lot 115	20371
11/25/15	Blk 52, Lot 78	20371
02/02/16	Block 52.05	20371
6/15/16	Blk 52, Lot 78	20371
6/23/16	Blk 52, Lot 39 ADDED EASEMENT	20371
11/10/21	ADDED PHASE 2D FOUR SEASONS	20371
07/13/22	Blk 52, Lots 123 & 123.01	20371



NEW JERSEY DEPARTMENT OF THE TREASURY
 DIVISION OF TAXATION
 PROPERTY ADMINISTRATION
 APPROVED AS A TAX MAP PURSUANT TO THE AUTHORITY OF
 N.J.S.A. 54:15 & 54:9-1
 FOR THE DIRECTOR, DIVISION OF TAXATION
James J. Coll C.T.A.
 JAMES J. COLL, CHIEF, LOCAL ASSESSMENT COMPLIANCE
William H. Black C.T.A.
 WILLIAM H. BLACK, SUPERVISING ENGINEER UTILITIES
 DATE: JAN 15 2002 SERIAL NO. 798

TAX ASSESSMENT MAP
 CITY OF MILLVILLE
 CUMBERLAND COUNTY, NEW JERSEY
 SCALE: 1" = 400'
 JUNE 2001
 ROBERT H. THOMAS, SR., N.J.S. 20371
 2429 E. MAIN ST. MILLVILLE, NEW JERSEY

THIS SHEET IS A DIGITIZED COPY OF THE TAX MAP PREPARED BY ROBERT H. THOMAS SR., PLS AND DATED JUNE 2001. THE APPROVED ORIGINAL IS ON FILE IN THE CITY OF MILLVILLE MUNICIPAL ENGINEERS OFFICE.