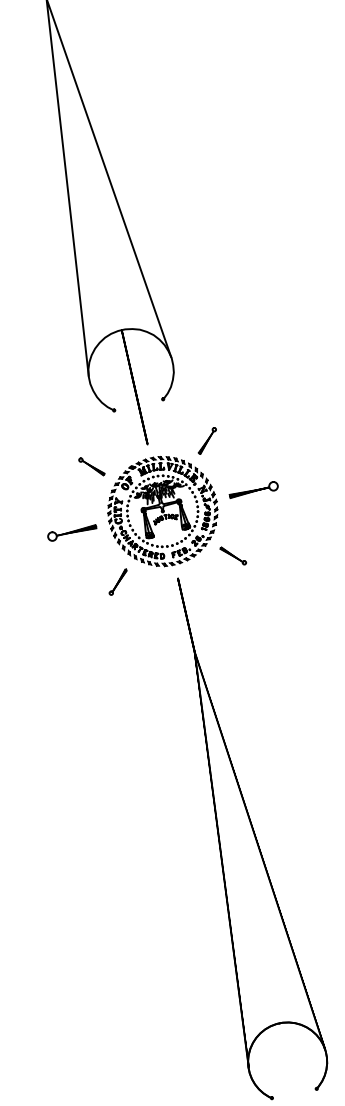


REVISIONS			REVISIONS		
DATE	NAME	NUMBER	DATE	NAME	NUMBER
5/21/04	Robert H. Thomas Sr., NJLS	20371	02/10/16	Block 32, Lot 42	20371
3/6/06	Robert H. Thomas Sr., NJLS	20371	04/06/16	Block 33, Lot 1	20371
8/1/06	Robert H. Thomas Sr., NJLS	20371	07/13/16	Block 32, Lot 34 S.S. Ease.	20371
5/29/08	Block 30	20371	12/07/17	Block 34, Lot 3	20371
11/25/09	Block 32, lots 7,8 & 9	20371	1/08/19	Block 32, Lots 7&7.01(revised)	20371
12/23/09	Block 32, lots 34 & 34.01	20371	5/13/20	Block 28 & 29 to Sheet 5	20371
4/18/12	Sheet Check	20371	8/24/22	Block 32 Lot 8 & 10	20371
2/10/15	Block 30, lots 24	20371			

See Sheet 4



UNION LAKE

35

32

34

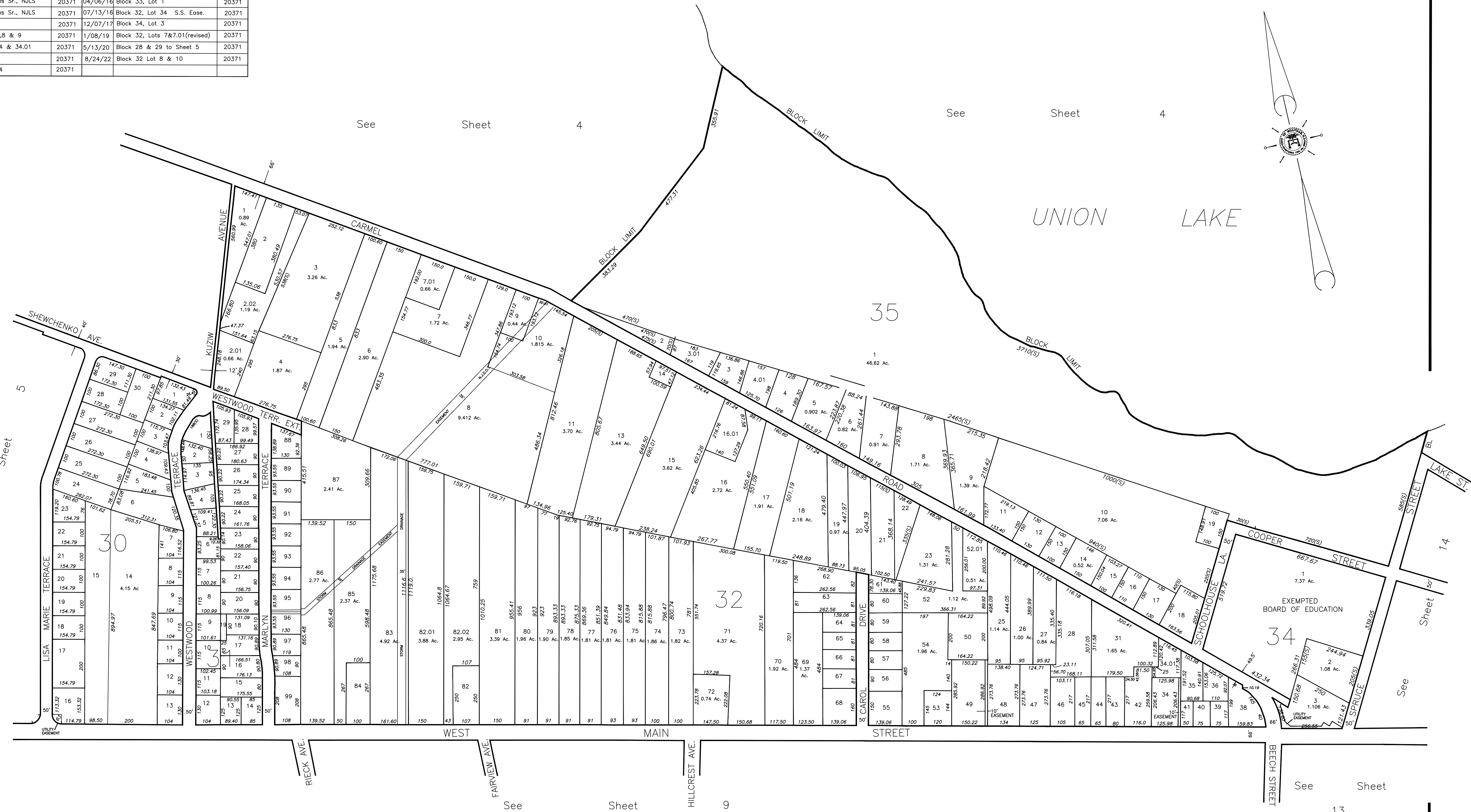
See Sheet 5

51

See Sheet 14

See Sheet 13

THIS SHEET IS A DIGITIZED COPY OF THE TAX MAP PREPARED BY ROBERT H. THOMAS, SR., P.E., AND LISTED  
 IN THE APPROVED LISTING OF SURVEYORS IN THE CITY OF MILLVILLE MUNICIPAL ENGINEERS OFFICE  
 JAN. 2001.



**TAX ASSESSMENT MAP**  
 CITY OF MILLVILLE  
 CUMBERLAND COUNTY, NEW JERSEY  
 SCALE: 1" = 200' JUNE 2001  
 ROBERT H. THOMAS, SR., NJLS 20371  
 2429 E. MAIN ST. MILLVILLE, NEW JERSEY

NEW JERSEY DEPARTMENT OF THE TREASURY  
 DIVISION OF TAXATION  
 PROPERTY ADMINISTRATION  
 APPROVED AS A TAX MAP PURSUANT TO THE AUTHORITY OF  
 N.J.S.A. 54:13 & 54:9-1  
 FOR THE DIRECTOR, DIVISION OF TAXATION  
*James J. Coll* C.T.A.  
 JAMES J. COLL, CHIEF LOCAL ASSESSMENT COMPLIANCE  
*William H. Black* C.T.A.  
 WILLIAM H. BLACK, SUPERVISING ENGINEER UTILITIES  
 DATE: JAN 15 2002 SERIAL NO. 798