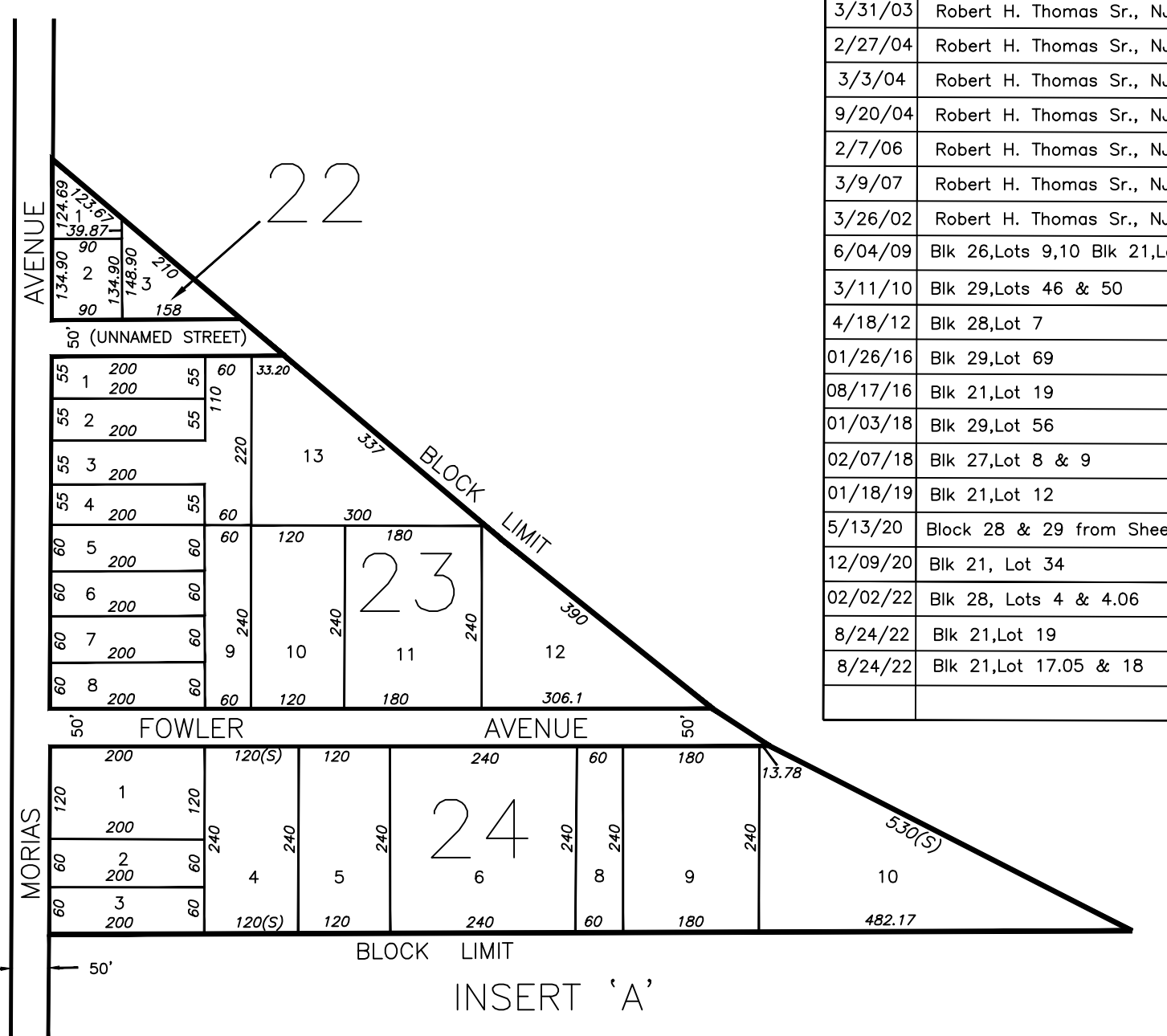
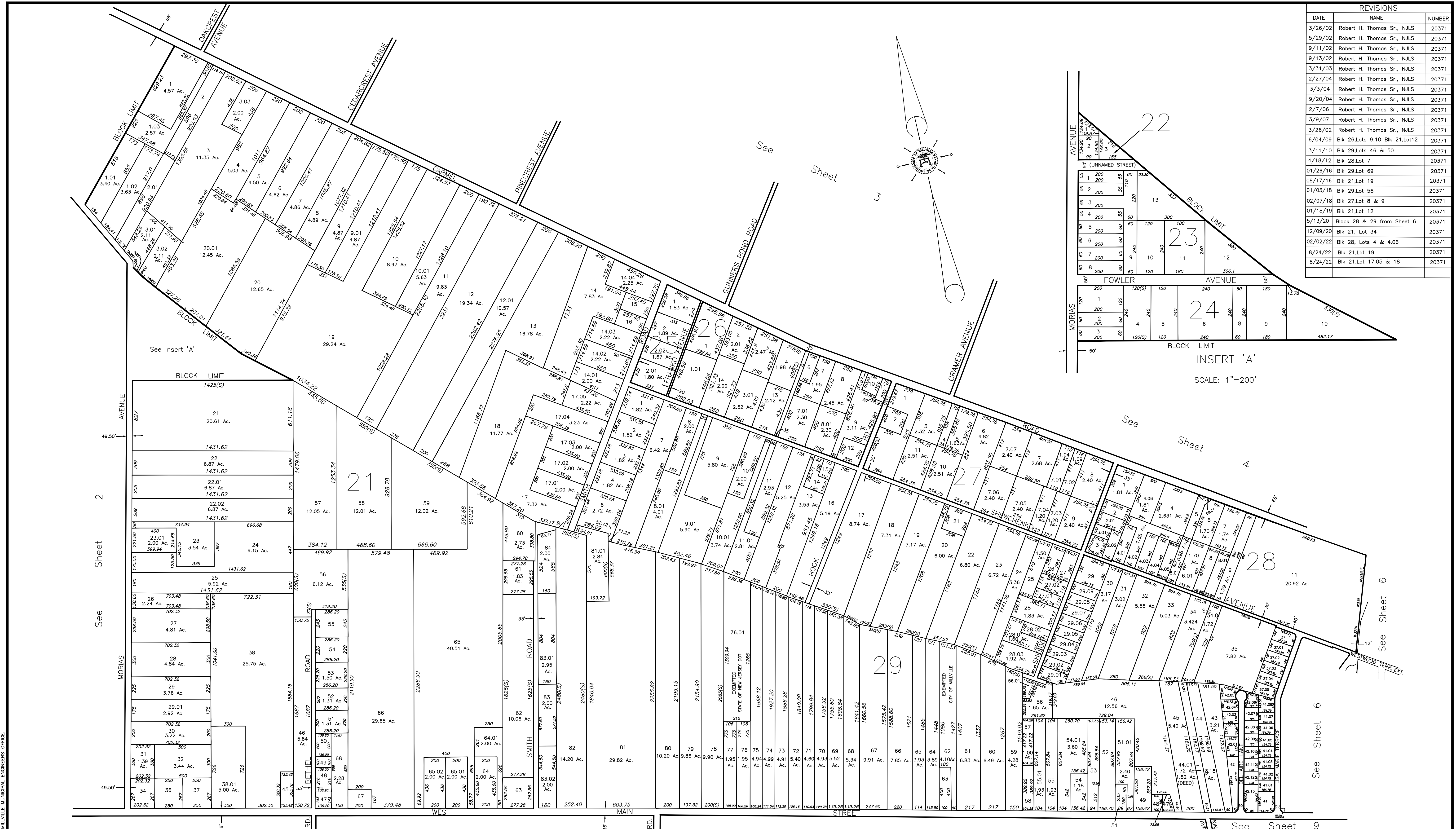


REVISIONS		
DATE	NAME	NUMBER
3/26/02	Robert H. Thomas Sr., NJLS	20371
5/29/02	Robert H. Thomas Sr., NJLS	20371
9/11/02	Robert H. Thomas Sr., NJLS	20371
9/13/02	Robert H. Thomas Sr., NJLS	20371
3/31/03	Robert H. Thomas Sr., NJLS	20371
2/27/04	Robert H. Thomas Sr., NJLS	20371
3/3/04	Robert H. Thomas Sr., NJLS	20371
9/20/04	Robert H. Thomas Sr., NJLS	20371
2/7/06	Robert H. Thomas Sr., NJLS	20371
3/9/07	Robert H. Thomas Sr., NJLS	20371
3/26/02	Robert H. Thomas Sr., NJLS	20371
6/04/09	Blk 26,Lots 9,10 Blk 21, Lot 12	20371
3/11/10	Blk 29,Lots 46 & 50	20371
4/18/12	Blk 28,Lot 7	20371
01/26/16	Blk 29,Lot 69	20371
08/17/16	Blk 21,Lot 19	20371
01/03/18	Blk 29,Lot 56	20371
02/07/18	Blk 27,Lot 8 & 9	20371
01/18/19	Blk 21,Lot 12	20371
5/13/20	Block 28 & 29 from Sheet 6	20371
12/09/20	Blk 21, Lot 34	20371
02/02/22	Blk 28, Lots 4 & 4.06	20371
8/24/22	Blk 21,Lot 19	20371
8/24/22	Blk 21,Lot 17.05 & 18	20371



THIS SHEET IS A DIGITIZED COPY OF THE TAX MAP PREPARED BY ROBERT H. THOMAS SR., PLS AND DATED JUNE 2001. THE APPROVED ORIGINAL IS ON FILE IN THE CITY OF MILLVILLE MUNICIPAL ENGINEERS OFFICE.

TAX ASSESSMENT MAP
CITY OF MILLVILLE
CUMBERLAND COUNTY, NEW JERSEY
SCALE: 1" = 400' JUNE 2001
ROBERT H. THOMAS, SR., NJLS 20371
2429 E. MAIN ST. MILLVILLE, NEW JERSEY

NEW JERSEY DEPARTMENT OF THE TREASURY
DIVISION OF TAXATION
PROPERTY ADMINISTRATION
APPROVED AS A TAX MAP PURSUANT TO THE AUTHORITY OF
N.J.S.A. 54:1-15 & 54:5-1
FOR THE DIRECTOR, DIVISION OF TAXATION
James J. Coll CTA
JAMES J. COLL, CHIEF LOCAL ASSESSMENT COMPLIANCE
William H. Black CTA
WILLIAM H. BLACK, SUPERVISING ENGINEER UTILITIES
DATE: JAN 15 2002 SERIAL NO. 798